


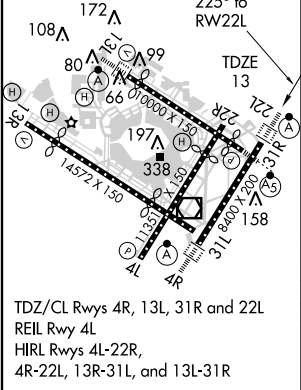
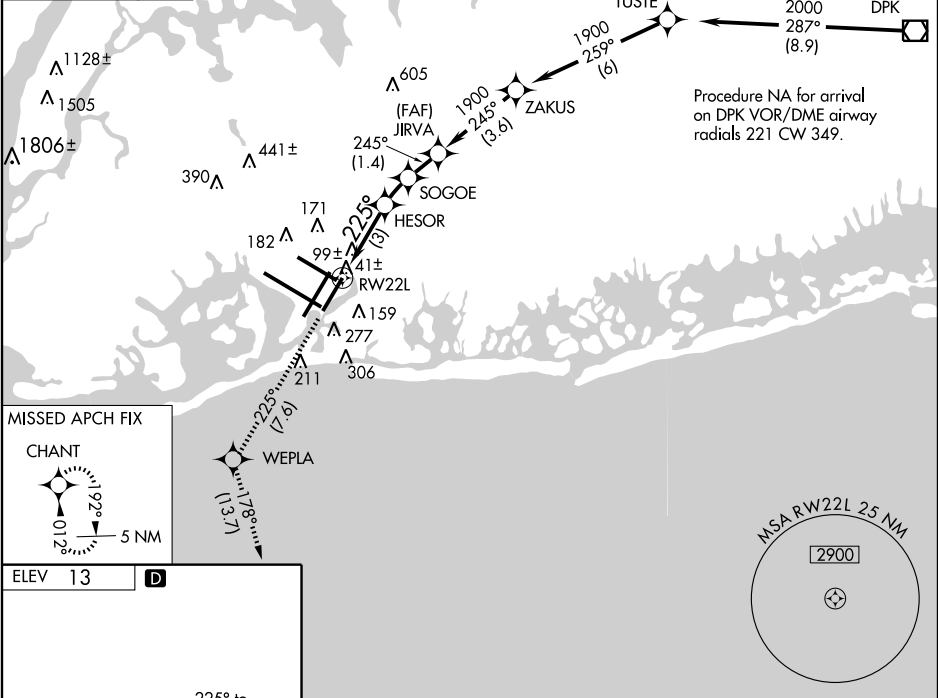
| | | |
|---------|----------|------|
| APP CRS | Rwy Idg | 8400 |
| 225° | TDZE | 13 |
| | Apt Elev | 13 |

RNAV (RNP) Z RWY 22L
NEW YORK / JOHN F. KENNEDY INTL (JFK)

NA For uncompensated Baro-VNAV systems, procedure NA below -13°C (8°F) or above 49°C (120°F). RF and GPS Required. For inoperative ALSF, increase RNP 0.20 DA visibility to RVR 5000 all Cats, RNP 0.30 DA visibility to RVR 6000 all Cats. Visibility reduction by helicopters NA.

ALSF-2

MISSED APPROACH: Climb to 3000 via 225° track to WEPLA and via 178° track to CHANT and hold.

| ARR | ATIS | NEW YORK APP CON | KENNEDY TOWER | GND CON | CLNC DEL |
|-----------|-------|------------------|-------------------------|--------------|--------------|
| (NE) (SW) | | | Rwys 4R/22L and 13L/31R | | |
| 128.725 | 117.7 | 127.4 | 269.0 | 119.1 281.55 | 121.9 348.6 |
| DEP | | | Rwys 4L/22R and 13R/31L | 123.9 281.55 | 135.05 348.6 |
| 115.1 | | | | | |



| CATEGORY | A | B | C | D |
|-------------|---|--------|-------------|---|
| RNP 0.20 DA | | 339/40 | 326 (400-¾) | |
| RNP 0.30 DA | | 408/50 | 395 (400-1) | |

SPECIAL AIRCRAFT AND AIRCREW AUTHORIZATION REQUIRED