

AL-610 (FAA)

VOR/DME JFK <b>115.9</b> Chan <b>106</b>	APP CRS <b>232°</b>	Rwy Idg <b>8400</b> TDZE <b>13</b> Apt Elev <b>13</b>
--	------------------------	---

VOR/DME RWY 22L

NEW YORK / JOHN F. KENNEDY INTL (JFK)

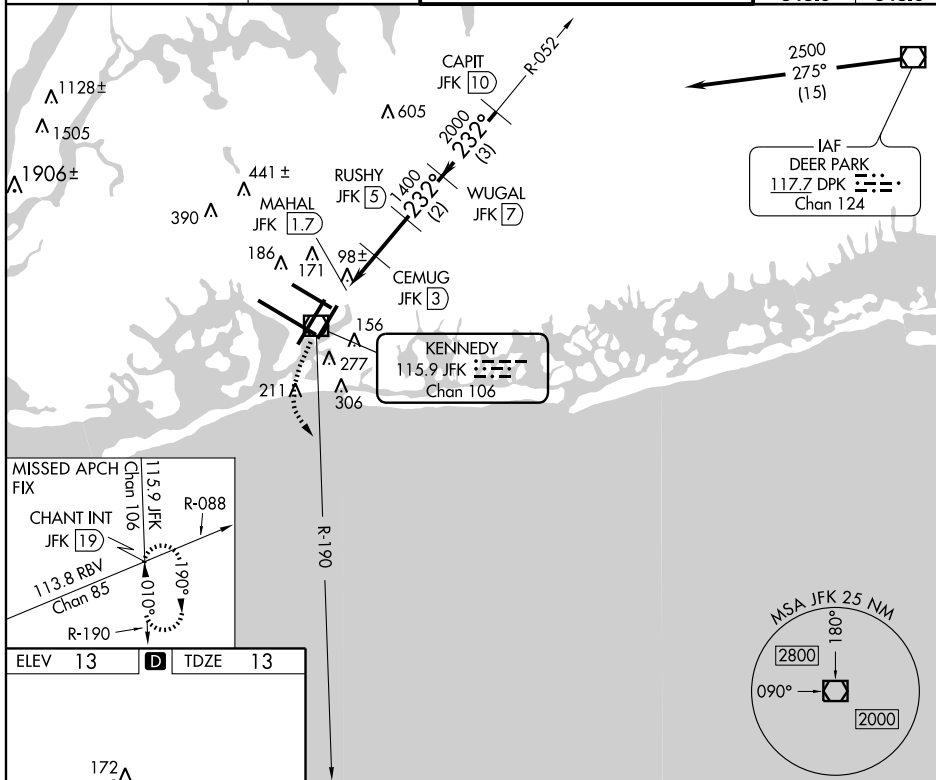


ALSF-2

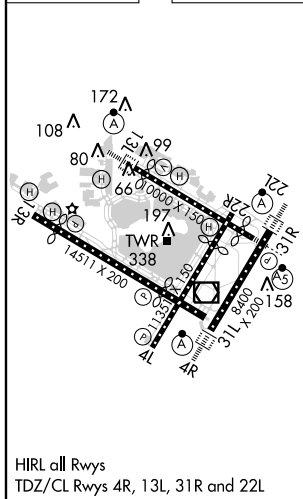


**MISSED APPROACH:** Climbing left turn to 3000 via JFK R-190 to CHANT INT/19 DME and hold.

ATIS			NEW YORK APP CON		KENNEDY TOWER			GND CON	CLNC DEL
(ARR-NE)	(ARR-SW)				Rwys 4R/22L and 13L/31R	119.1	281.55	121.9	135.05
128.725	117.7	115.4	127.4	269.0	Rwys 4L/22R and 13R/31L	123.9	281.55	348.6	348.6



ELEV	13	<b>D</b>	TDZE	13
------	----	----------	------	----



CATEGORY	A	B	C	D
S-22L	440/24 427 (500-½)		440/40 427 (500-¾)	440/50 427 (500-1)
CIRCLING	640-1 627 (700-1)		640-1¾ 627 (700-1¾)	640-2 627 (700-2)

NEW YORK, NEW YORK  
Amdt 4D 11293

NEW YORK / JOHN F. KENNEDY INTL (JFK)

40°38'N-73°47'W

VOR/DME RWY 22L

NE-2, 20 OCT 2011 to 17 NOV 2011

NE-2. 20 OCT 2011 to 17 NOV 2011