


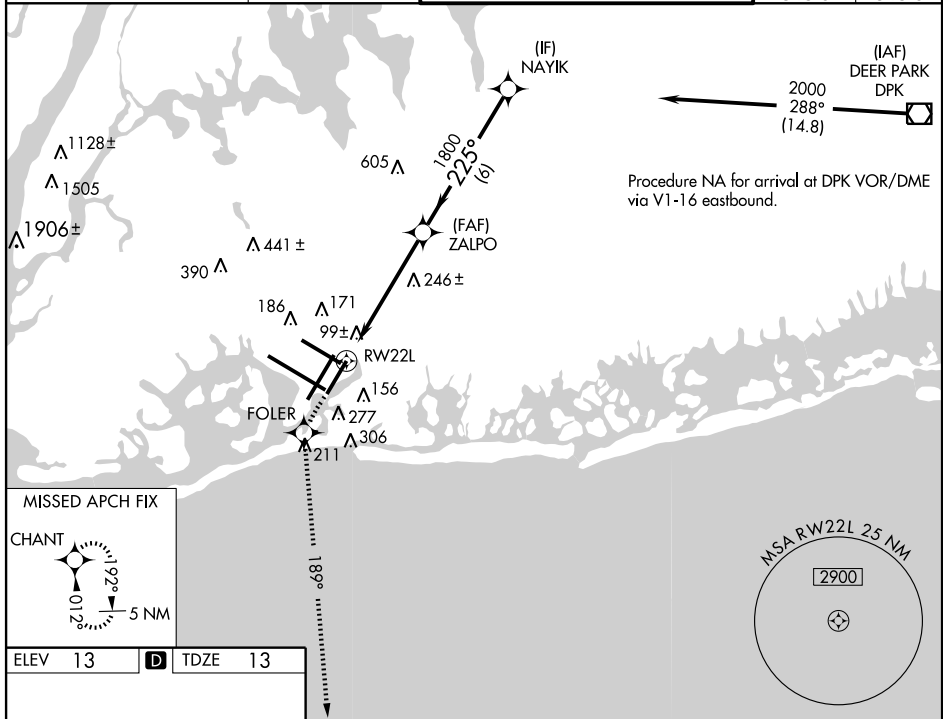
AL-610 (FAA)

RNAV (GPS) Y RWY 22L
NEW YORK / JOHN F. KENNEDY INTL (JFK)

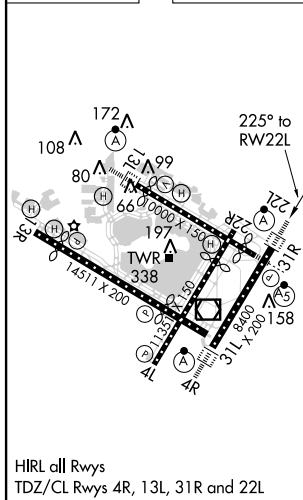
NEW YORK / JOHN F. KENNEDY INTL (JFK)

<p>T For uncompensated Baro-VNAV systems, LNAV/VNAV NA below -13°C (8°F) or above 49°C (120°F). DME/DME RNP-0.3 NA.</p>	<p>ALSF-2</p> 	<p>MISSED APPROACH: Climb to 3000 direct FOLR and via 189° track to CHANT and hold.</p>
--	---	---

ATIS (ARR-NE) (ARR-SW)		NEW YORK APP CON		KENNEDY TOWER		GND CON	CLNC DEL
128.725	117.7	115.4	127.4	269.0	Rwys 4R/22L and 13L/31R 119.1 281.55	121.9	135.05
					Rwys 4L/22R and 13R/31L 123.9 281.55	348.6	348.6



ELEV	13	D	TDZE	13
------	----	----------	------	----



3000 ↑	FOLER ✦	tr 189°	CHANT ✦	VGS1 and RNAV glidepath not coincident (VGS1 Angle 3.00/TCH 66).			
*LNAV only							
				2000 Procedure Turn NA GS 3.00° TCH 53			
CATEGORY	A	B	C	D			
LPV DA	270/24		257 (300-½)				
LNAV/ VNAV	420/50		407 (500-1)				
LNAV MDA	560/24 547 (600-½)		560/50 547 (600-1)		560/60 547 (600-1¼)		
CIRCLING	640-1 627 (700-1)		640-1¼ 627 (700-1¾)		640-2 627 (700-2)		

NEW YORK / JOHN F. KENNEDY INTL (JFK)

40°38'N-73°47'W

RNAV (GPS) Y RWY 22L

NE-2, 20 OCT 2011 to 17 NOV 2011

NE-2: 20 OCT 2011 to 17 NOV 2011