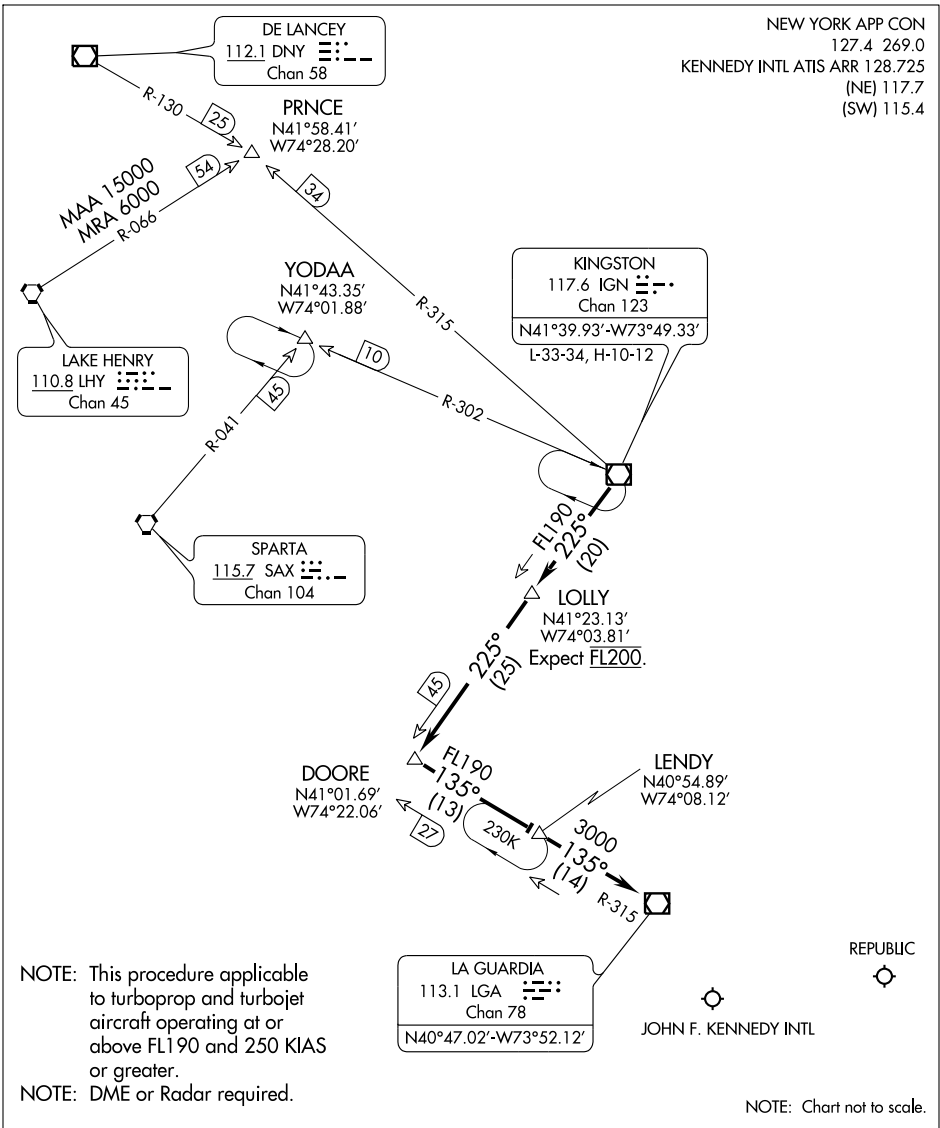


KINGSTON NINE ARRIVAL

NEW YORK, NEW YORK



ARRIVAL ROUTE DESCRIPTION

From over IGN VOR/DME on IGN R-225 to LOLLY/20 DME, then on IGN R-225 to DOORE INT, then on LGA R-315 to LENDY/14 DME, then on LGA R-315 to LGA VOR/DME. Expect radar vectors to final approach course after LGA VOR/DME.

KINGSTON NINE ARRIVAL

NEW YORK, NEW YORK

NE-2, 20 OCT 2011 to 17 NOV 2011

NE-2, 20 OCT 2011 to 17 NOV 2011