

NEW YORK, NEW YORK

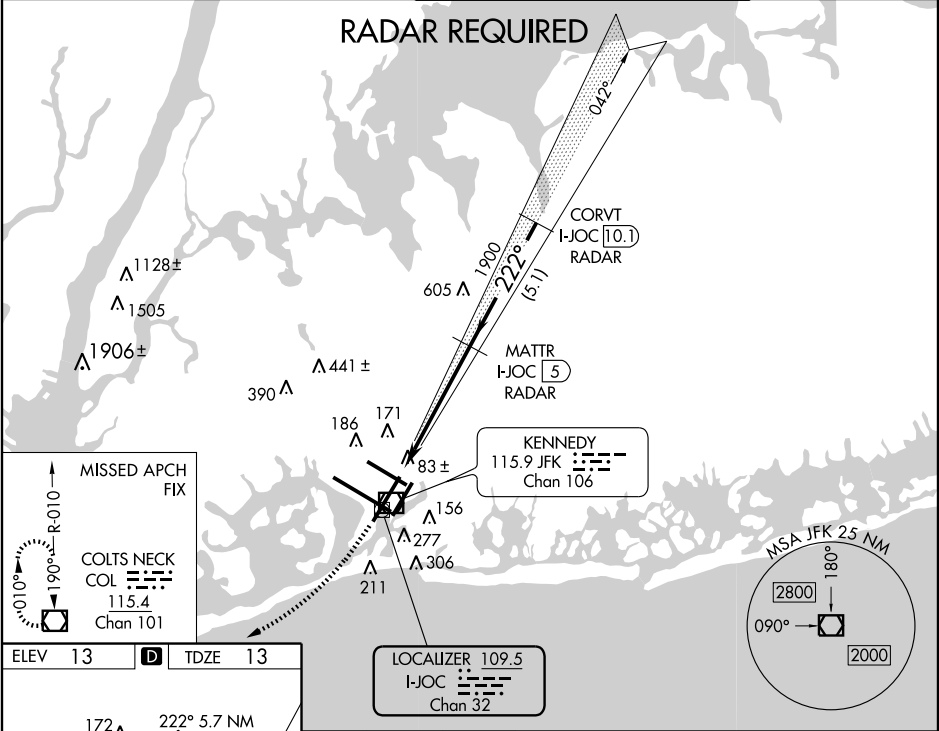
AL-610 (FAA)

| | | | |
|---------------|---------|----------|------|
| LOC/DME I-JOC | APP CRS | Rwy Idg | 8655 |
| 109.5 | 222° | TDZE | 13 |
| Chan 32 | | Apt Elev | 13 |

ILS RWY 22R

NEW YORK / JOHN F. KENNEDY INTL (JFK)

| | | | | | | | |
|---------------------------|-------|------------------|-------------|-------------------------|--------------|---------|----------|
| ATIS (ARR-NE) (ARR-SW) | | NEW YORK APP CON | | KENNEDY TOWER | | GND CON | CLNC DEL |
| 128.725 | 117.7 | 115.4 | 127.4 269.0 | Rwys 4R/22L and 13L/31R | 119.1 281.55 | 121.9 | 135.05 |
| | | | | Rwys 4L/22R and 13R/31L | 123.9 281.55 | 348.6 | 348.6 |



| | | | |
|--|------|------|----------------|
| ELEV | 13 | TDZE | 13 |
| HIRL all Rws TDZ/CL Rws 4R, 13L, 31R and 22L FAF to MAP 5.7 NM | | | |
| Knots | 60 | 90 | 120 150 180 |
| Min:Sec | 5:42 | 3:48 | 2:51 2:17 1:54 |

NEW YORK, NEW YORK

Amdt 2 11293

NEW YORK / JOHN F. KENNEDY INTL (JFK)

40°38'N-73°47'W

ILS RWY 22R

NE-2, 20 OCT 2011 to 17 NOV 2011

NE-2, 20 OCT 2011 to 17 NOV 2011