

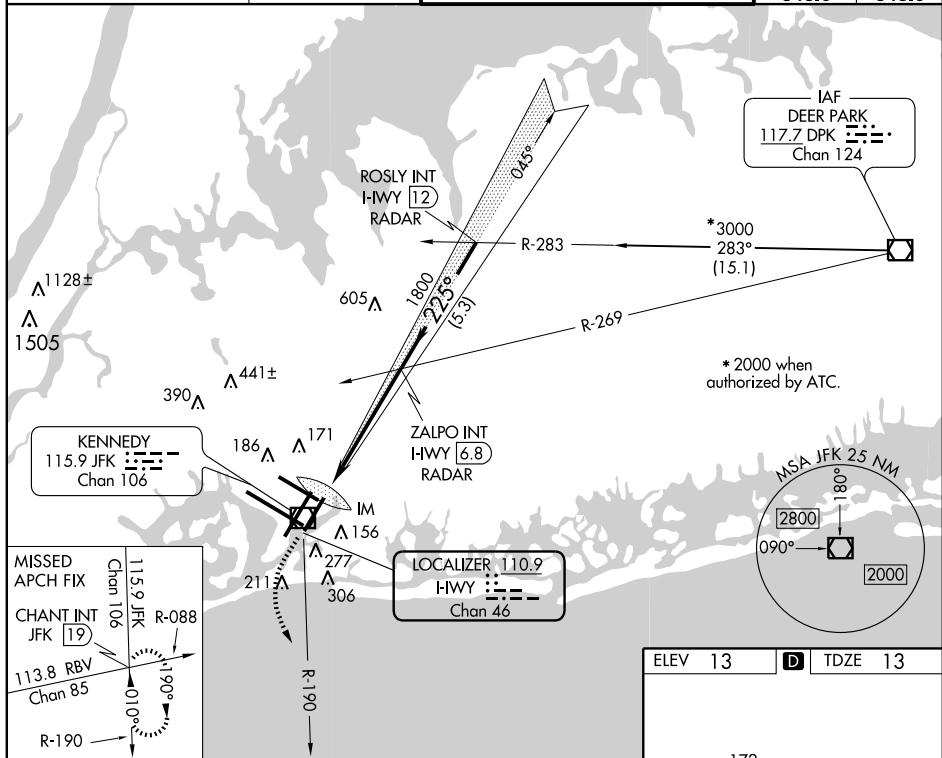


LOC/DME I-HWY 110.9 Chan 46	APP CRS 225°	Rwy Idg 8400 TDZE 13 Apt Elev 13
---	------------------------	---

ILS RWY 22L (CAT II)
NEW YORK / JOHN F. KENNEDY INTL (JFK)

		ALSF-2 		MISSED APPROACH: Climb to 500 then climbing left turn to 3000 via JFK R-190 to CHANT INT/19 DME and hold.			
ATIS (ARR-NE) (ARR-SW)		NEW YORK APP CON		KENNEDY TOWER		GND CON	CLNC DEL
128.725	117.7 115.4	127.4 269.0	Rwy's 4R/22L and 13L/31R Rwy's 4L/22R and 13R/31L		119.1 281.55 123.9 281.55	121.9 348.6	135.05 348.6



500	3000	CHANT INT
↑	JFK R-190	

ZALPO INT I-HWY 6.8
 RADAR

ROSLY INT I-HWY 12
 RADAR

DH
 RA 113
 IM
 13 MSL
 1800
 225°
 3000*
 *2000 when authorized by ATC.
 Procedure Turn NA
 GS 3.00°
 TCH 53

959' 891' 5.3 NM 5.3 NM

CATEGORY	A	B	C	D
S-ILS 22L	RA 113/12 100 DA 113			

CATEGORY II ILS - SPECIAL AIRCREW & AIRCRAFT CERTIFICATION REQUIRED

