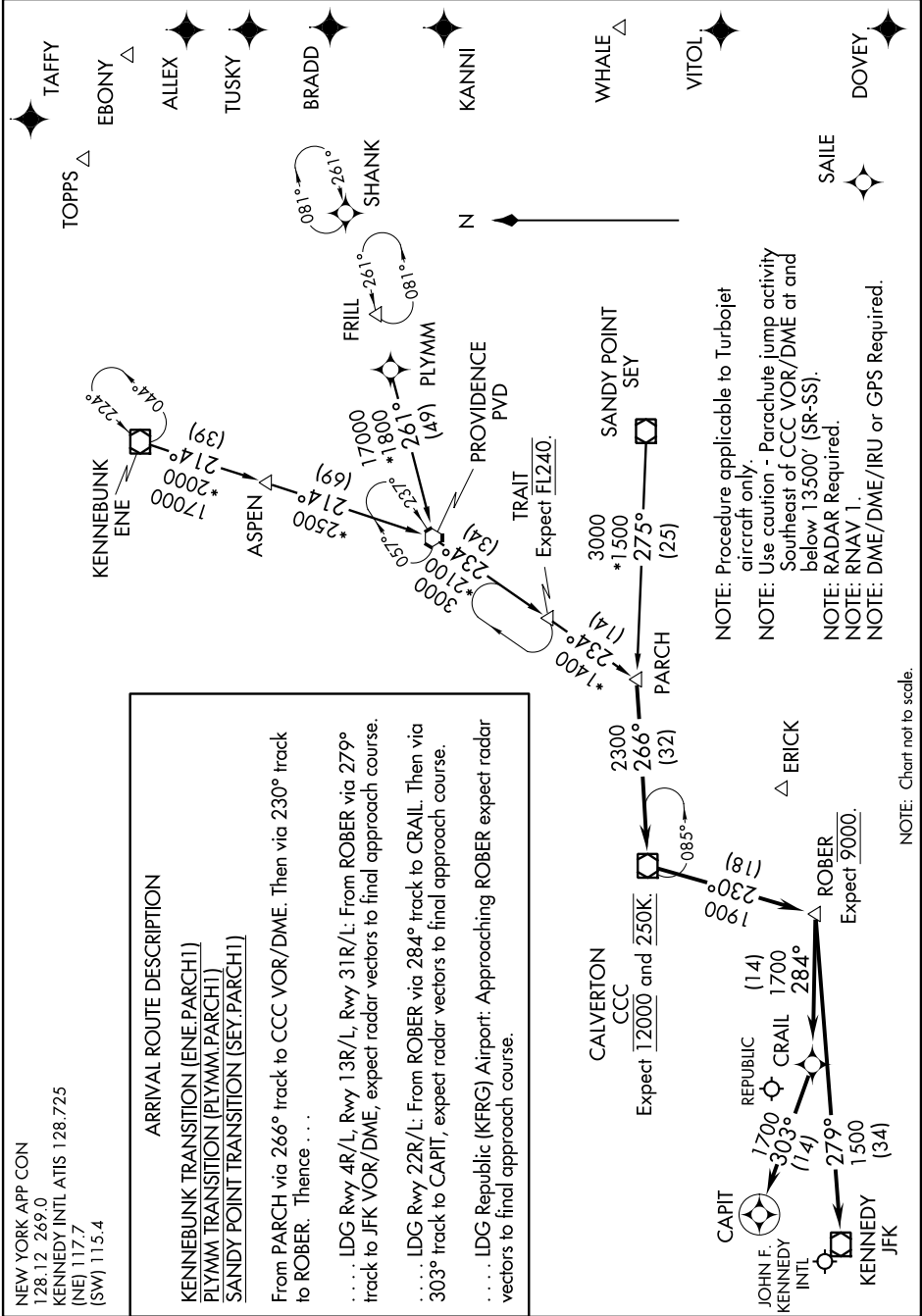


PARCH ONE ARRIVAL (RNAV)

ST-610 (FAA)

NEW YORK, NEW YORK

NE-2, 17 OCT 2013 to 14 NOV 2013



PARCH ONE ARRIVAL (RNAV)

NEW YORK, NEW YORK

NE-2, 17 OCT 2013 to 14 NOV 2013