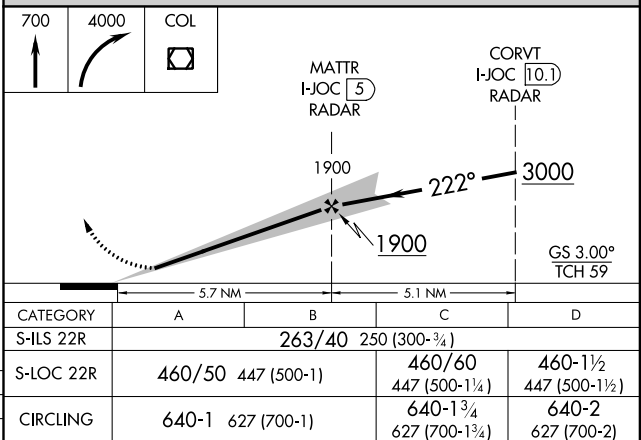
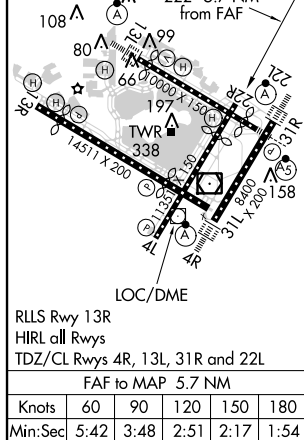
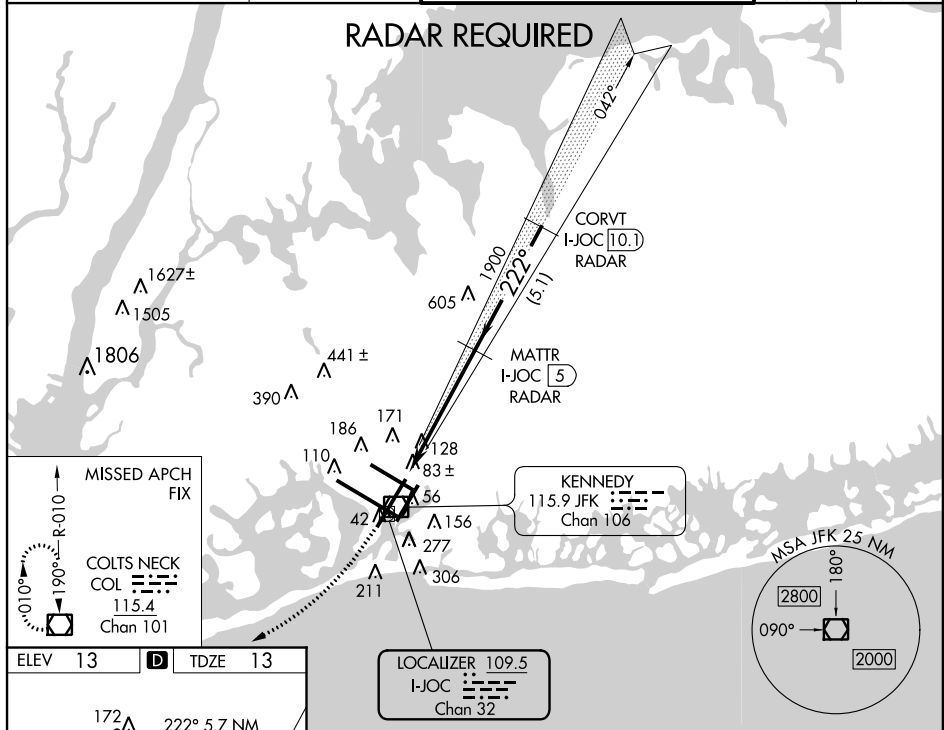


ILS RWY 22R  
JOHN F. KENNEDY INTL (JFK)

**MISSED APPROACH:** Climb to 700 then climbing right turn to 4000 direct COL VOR/DME and hold.

ATIS (ARR-NE) (ARR-SW)			NEW YORK APP CON		KENNEDY TOWER		GND CON	CLNC DEL
128.725	117.7	115.4	128.12	269.0	Rwys 4R/22L and 13L/31R	119.1 281.55	121.9	135.05
					Rwys 4L/22R and 13R/31L	123.9 281.55	348.6	348.6



NE-2, 17 OCT 2013 to 14 NOV 2013

NE-2. 17 OCT 2013 to 14 NOV 2013