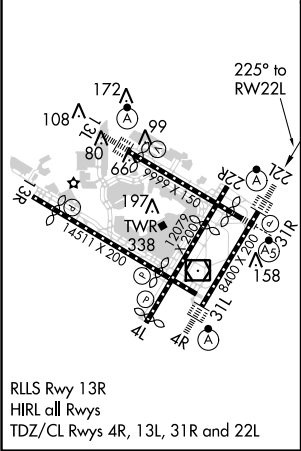
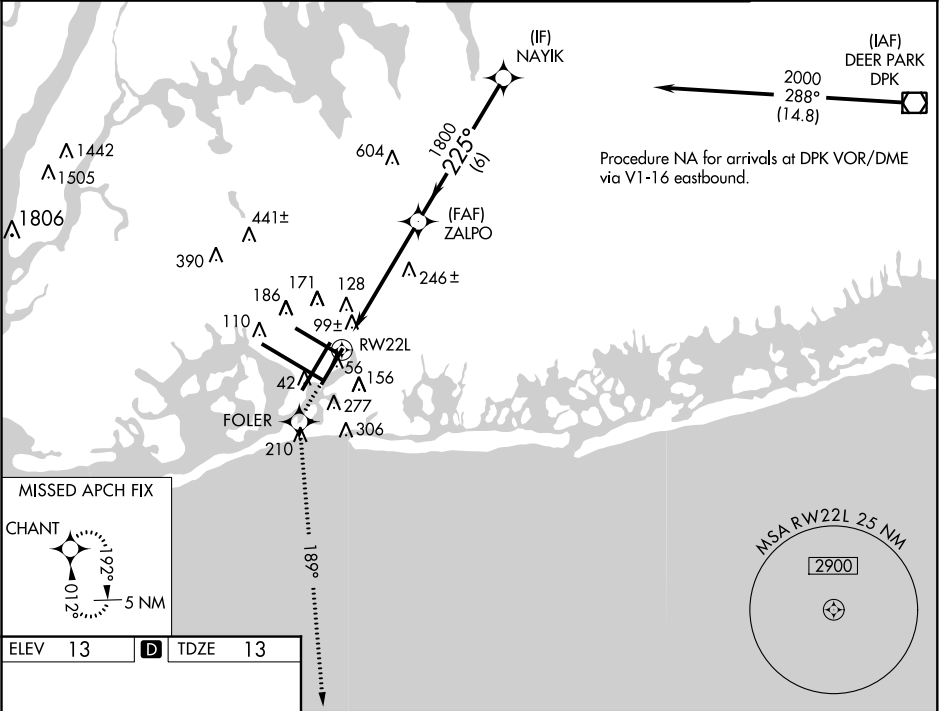


| | | |
|--|------------------------|---|
| WAAS CH 97318 W22A | APP CRS 225° | Rwy Idg TDZE 13 Apt Elev 13 |
|--|------------------------|---|

RNAV (GPS) Y RWY 22L
JOHN F KENNEDY INTL (JFK)

| | | |
|--|------------|---|
| ▼ For uncompensated Baro-VNAV systems, LNAV/VNAV NA below -13°C (8°F) or above 49°C (120°F). DME/DME RNP-0.3 NA. Simultaneous approach authorized with Rwy 22R. LNAV procedure NA during simultaneous operations. Use of FD or AP providing RNAV track guidance required during simultaneous operations. | ALSF-2 | MISSED APPROACH: Climb to 3000 direct FOLER and via 189° track to CHANT and hold. |
|--|------------|---|

| | | | | |
|---|---|---|-------------------------------|---------------------------------|
| ATIS (ARR-NE) (ARR-SW) 128.725 117.7 115.4 | NEW YORK APP CON 128.12 269.0 | KENNEDY TOWER Rwys 4R/22L and 13L/31R 119.1 281.55 Rwys 4L/22R and 13R/31L 123.9 281.55 | GND CON 121.9 348.6 | CLNC DEL 135.05 348.6 |
|---|---|---|-------------------------------|---------------------------------|



| | | | | |
|--------------------|--------------------|---------|---------------------|--|
| 3000 | FOLER | tr 189° | CHANT | VGSI and RNAV glidepath not coincident (VGSI Angle 3.00/TCH 66). |
| *LNAV only | | | | |
| *1.5 NM to RWY 22L | | | | |
| NAYIK | | | | |
| 2000 | | | | |
| Procedure Turn NA | | | | |
| GP 3.00° TCH 53 | | | | |
| CATEGORY | A | B | C | D |
| LPV DA | 270/24 | | 257 (300-½) | |
| LNAV/VNAV DA | 420/50 | | 407 (500-1) | |
| LNAV MDA | 560/24 547 (600-½) | | 560/50 547 (600-1) | 560/60 547 (600-1¼) |
| CIRCLING | 640-1 627 (700-1) | | 640-1¾ 627 (700-1¾) | 640-2 627 (700-2) |