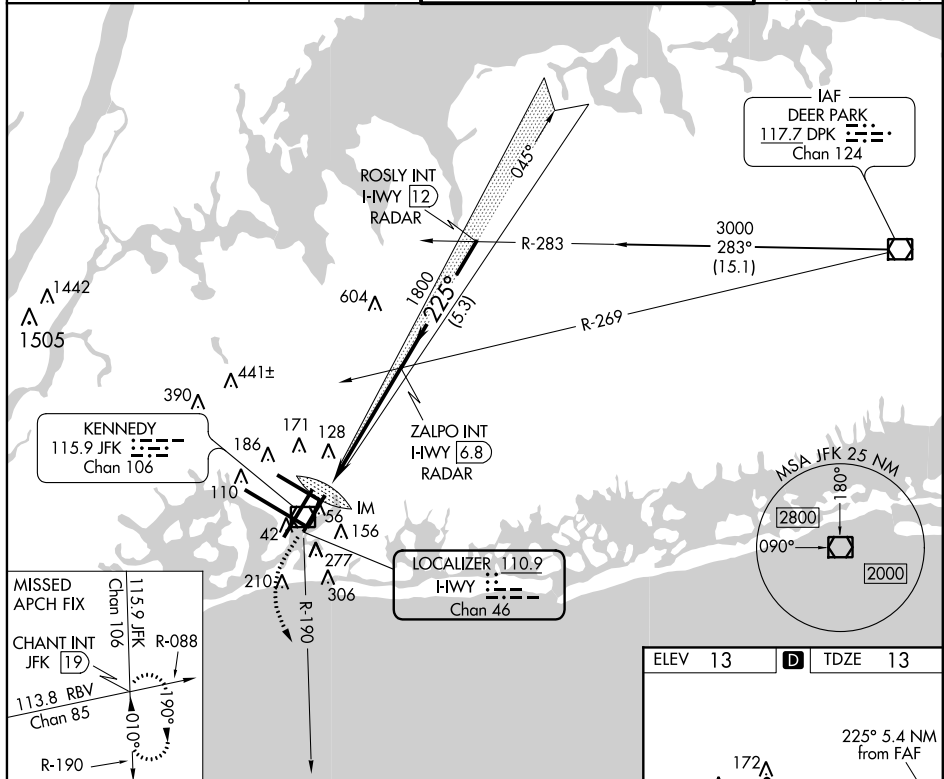


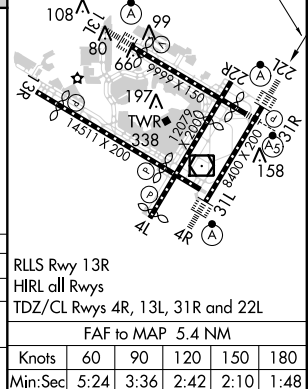
ILS or LOC RWY 22L
JOHN F KENNEDY INTL (JFK)

MISSED APPROACH: Climb to 500 then climbing left turn to 3000 via JFK R-190 to CHANT INT/19 DME and hold.

ATIS (ARR-NE) (ARR-SW)			NEW YORK APP CON		KENNEDY TOWER		GND CON	CLNC DEL
128.725	117.7	115.4	128.12	269.0	Rwys 4R/22L and 13L/31R	119.1 281.55	121.9	135.05
					Rwys 4L/22R and 13R/31L	123.9 281.55	348.6	348.6



500 ↑	3000 JFK R-190	CHANT INT	ZALPO INT I-HWY <u>6.8</u> RADAR		ROSLY INT I-HWY <u>12</u> RADAR		Procedure Turn NA
CATEGORY	A		B		C		D
S-ILS 22L			213/18		200 (200-½)		
S-LOC 22L	460/24		447 (500-½)		460/40 447 (500-¾)		460/50 447 (500-1)
CIRCLING	640-1		627 (700-1)		640-1¾ 627 (700-1¾)		640-2 627 (700-2)



NE-2, 15 OCT 2015 to 12 NOV 2015

NE-2, 15 OCT 2015 to 12 NOV 2015