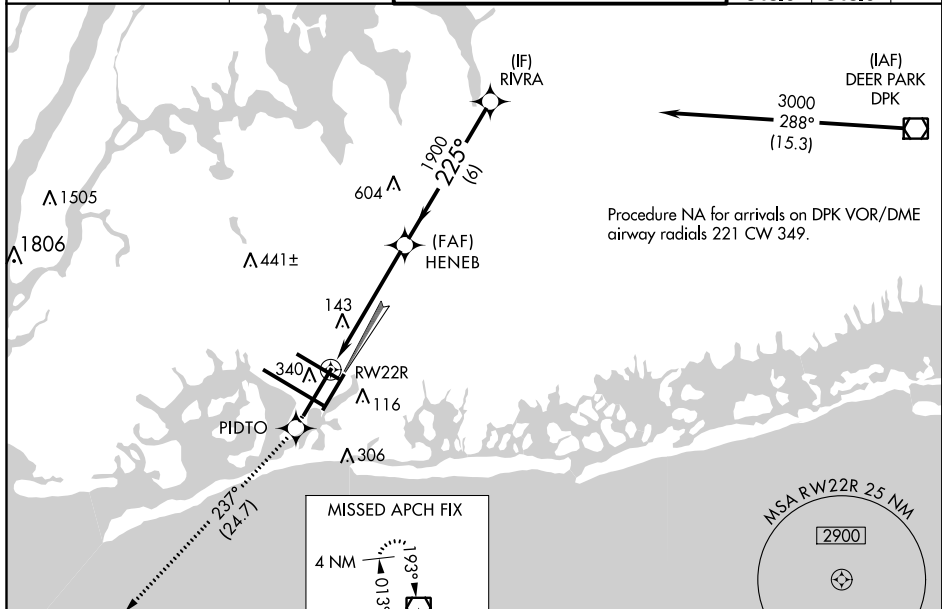


RNAV (GPS) RWY 22R  
JOHN F KENNEDY INTL (JFK)

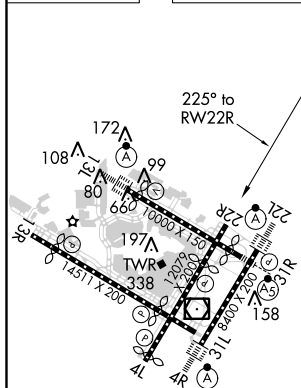
For uncompensated Baro-VNAV systems, LNAV/VNAV NA below -12°C (11°F) or above 54°C (130°F). DME/DME RNP-0.3 NA. Simultaneous approach authorized. LNAV procedure NA during simultaneous operations. Use of FD or AP providing RNAV track guidance required during simultaneous operations.

**MISSED APPROACH:**  
Climb to 4000 direct  
PIDTO and on track 237°  
to COL VOR/DME and hold.



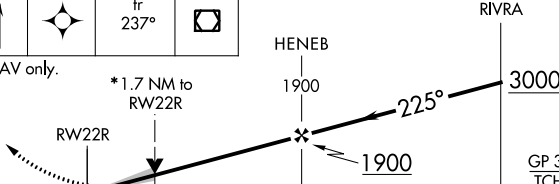

D-ATIS (ARR/DEP) (ARR-NE) (ARR-SW)			NEW YORK APP CON		KENNEDY TOWER			GND CON	CLNC DEL	CPDLC
128.725	117.7	115.4	128.12	269.0	Rwys 4R/22L and 13L/31R	119.1	281.55	121.9	135.05	
					Rwys 4L/22R and 13R/31L	123.9	281.55	348.6	348.6	



ELEV 13	<b>D</b>	TDZE 12
---------	----------	---------



REIL Rwy 4L  
RLLS Rwy 13R  
HIRL all Rwys  
TDZ/CL Rwys 4R, 13L, 31R and 22L

4000 ↑	PIDTO 	tr 237°	COL 				
* LNAV only.				* 1.7 NM to RW22R 1900 225° 3000 GP 3.00° TCH 59			
CATEGORY	A	B	C	D			
LPV DA	269/40 257 (300-¾)						
LNAV/VNAV DA	501-1½ 489 (500-1%)						
LNAV MDA	600/50 588 (600-1)			600-1¾ 588 (600-1¾)			
 CIRCLING	640-1 627 (700-1)			640-1¾ 627 (700-1¾)		660-2 647 (700-2)	

RNAV (GPS) RWY 22R