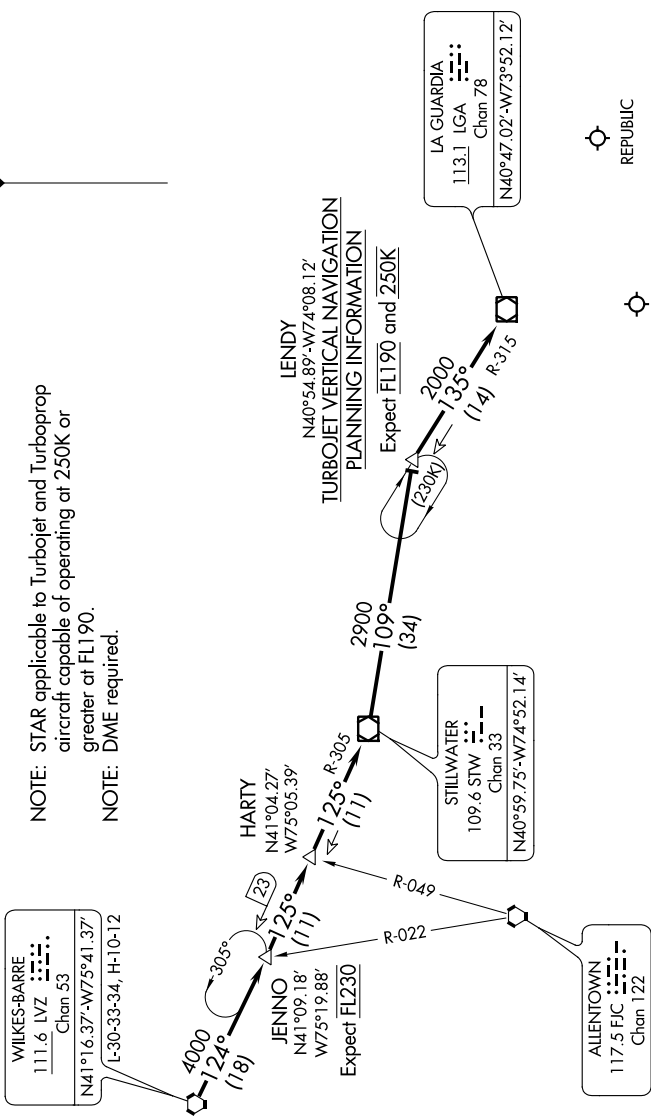


LENDY SIX ARRIVAL

NEW YORK, NEW YORK

NE-2, 12 OCT 2017 to 09 NOV 2017

NEW YORK APP CON  
128.12 269.0  
JOHN F KENNEDY INTL D-ATIS  
128.725 (ARR/DEP)  
117.7 (ARR-NE)  
115.4 (ARR-SW)  
REPUBLIC ATIS  
126.65



ARRIVAL ROUTE DESCRIPTION

From over LVZ VORTAC on LVZ R-124 to JENNO, then STW R-305 to HARTY INT, then STW R-305 to STW VOR/DME, then from STW VOR/DME on STW R-109 to LENDY, then on LGA R-315 to LGA VOR/DME. Expect radar vectors to final approach course after LGA VOR/DME.

NOTE: Chart not to scale.

NE-2, 12 OCT 2017 to 09 NOV 2017

LENDY SIX ARRIVAL

(LVZ.LENDY6) 20OCT11

NEW YORK, NEW YORK