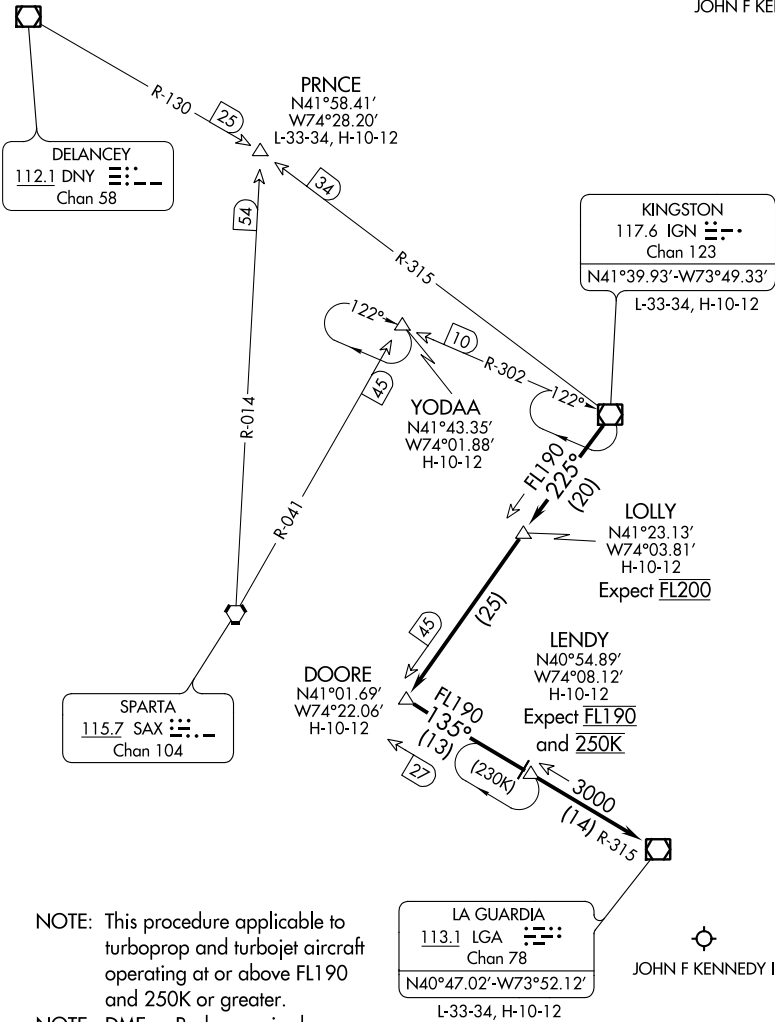


KINGSTON ONE ARRIVAL

NEW YORK, NEW YORK

NEW YORK APP CON
128.12 269.0
JOHN F KENNEDY INTL D-ATIS
128.725 (ARR/DEP)
117.7 (ARR-NE)
115.4 (ARR-SW)



REPUBLIC

JOHN F KENNEDY INTL

NOTE: Chart not to scale.

ARRIVAL ROUTE DESCRIPTION

From over IGN VOR/DME on IGN R-225 to LOLLY/20 DME, then on IGN R-225 to DOORE INT, then on LGA R-315 to LENDY/14 DME, then on LGA R-315 to LGA VOR/DME. Expect radar vectors to final approach course after LGA VOR/DME.

KINGSTON ONE ARRIVAL

NEW YORK, NEW YORK