

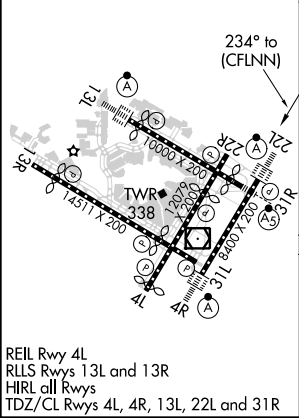
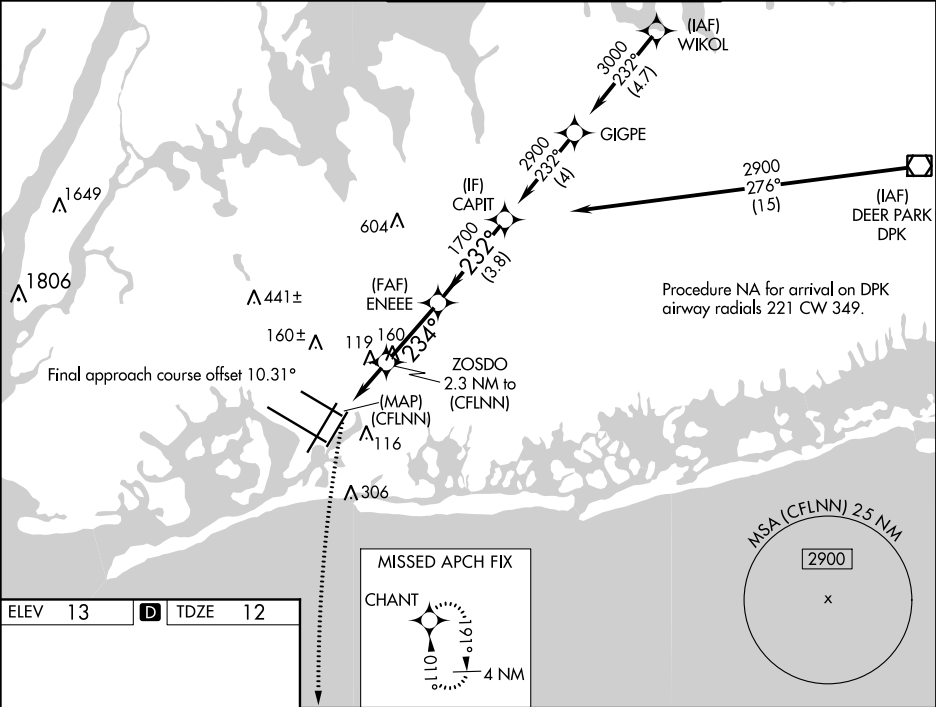
APP CRS	Rwy Idg	8400
234°	TDZE	12
	Apt Elev	13



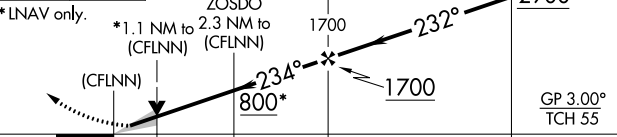

RNAV (GPS) X RWY 22L

JOHN F KENNEDY INTL (JFK)

RNP APCH - GPS.	ALSF-2	MISSED APPROACH: Climbing left turn to 3000 direct CHANT and hold.
For uncompensated Baro-VNAV systems, LNAV/VNAV NA below -14°C or above 54°C. For inop ALS, increase LNAV/VNAV all Cats visibility to RVR 6000.		

D-ATIS (ARR/DEP) (ARR-NE) (ARR-SW)	NEW YORK APP CON	KENNEDY TOWER	GND CON	CLNC DEL	CPDLC
128.725 117.7 115.4	128.125 269.0	Rwys 4R/22L and 13L/31R 119.1 281.55 Rwys 4L/22R and 13R/31L 123.9 281.55	121.9 348.6	135.05 348.6	



3000	CHANT	VGSI and RNAV glidepath not coincident (VGSI Angle 3.00/TCH 66).			
					
*LNAV only.					
		GP 3.00° TCH 55			
CATEGORY		A	B	C	D
LNAV/ VNAV	DA	413/40		401 (400-¾)	
LNAV MDA		440/24 428 (500-½)		440/40 428 (500-¾)	
 CIRCLING		640-1 627 (700-1)		680-1¾ 667 (700-1¾)	680-2 667 (700-2)