

APP CRS
224°

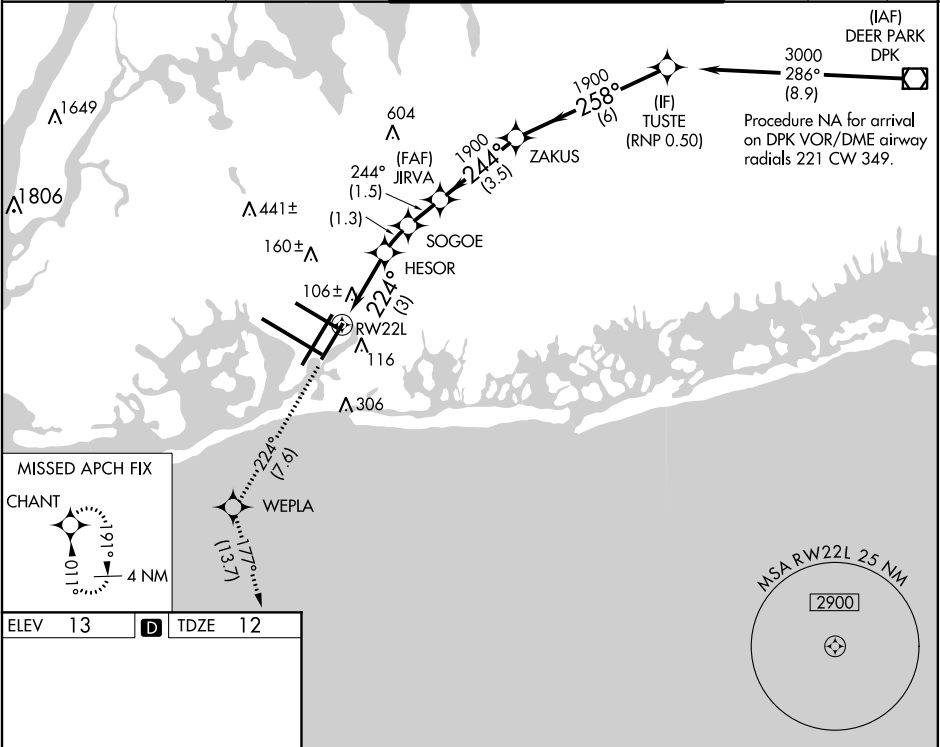
Rwy Idg
TDZE
Apt Elev

8400
12
13

RNAV (RNP) Z RWY 22L

JOHN F KENNEDY INTL (JFK)

RF required. RNP AR APCH.				ALSIF-2		MISSED APPROACH: Climb to 3000 on track 224° to WEPLA and on track 177° to CHANT and hold.	
▼ For uncompensated Baro-VNAV systems, procedure NA below -12°C (11°F) or above 54°C (130°F). Simultaneous approach authorized. Use of FD or AP providing RNAV track guidance required during simultaneous operations. For inop ALS, increase RNP 0.20 all Cats visibility to RVR 5500, increase RNP 0.30 all Cats visibility to RVR 6000.							
D-ATIS		NEW YORK APP CON		KENNEDY TOWER		GND CON	CLNC DEL
(ARR/DEP)	(ARR-NE)	(ARR-SW)		Rwys 4R/22L and 13L/31R	119.1 281.55	121.9	135.05
128.725	117.7	115.4	128.125 269.0	Rwys 4L/22R and 13R/31L	123.9 281.55	348.6	348.6
						CPDLC	



ELEV 13

D

TDZE 12

3000

tr 224°

WEPLA

tr 177°

CHANT

VGSI and RNAV glidepath not coincident (VGSI Angle 3.00/TCH 66).

JIRVA

ZAKUS

TUSTE

3000

258°

1900

244°

1900

1019

1429

HESOR

SOGOE

RW22L

224°

GP 3.00° TCH 50

CATEGORY	A	B	C	D
RNP 0.20 DA	361/40	349 (400-¾)		
RNP 0.30 DA	421/40	409 (500-¾)		

AUTHORIZATION REQUIRED