

AL-610 (FAA)

WAAS CH 97318 W22A	APP CRS 225°	Rwy Idg 8400 TDZE 13 Apt Elev 13
--	------------------------	---

RNAV (GPS) Y RWY 22L
NEW YORK / JOHN F. KENNEDY INTL (JFK)

NEW YORK / JOHN F. KENNEDY INTL (JFK)

T

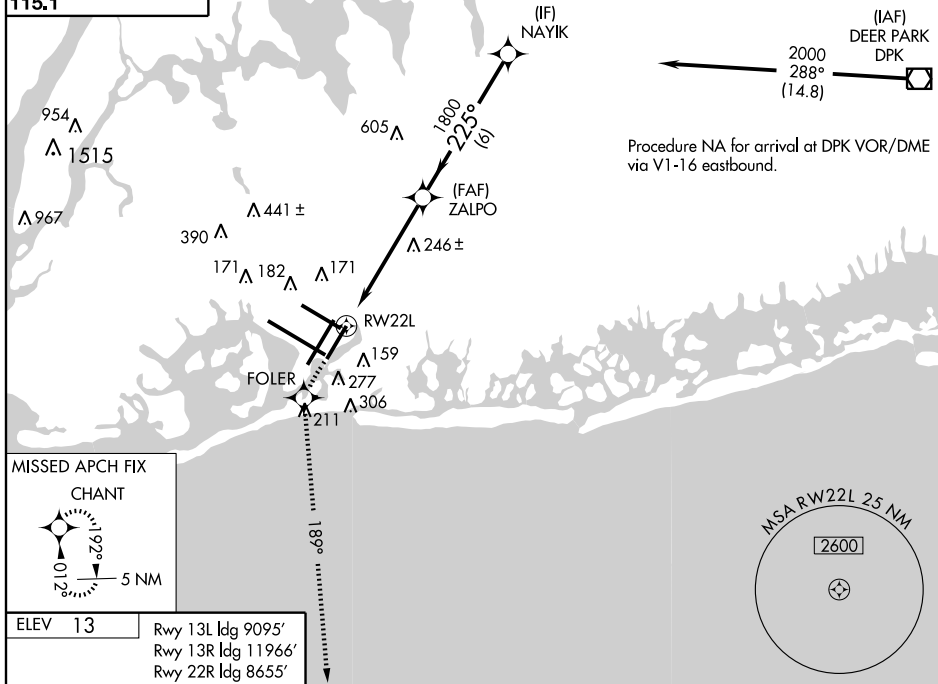
For uncompensated Baro-VNAV systems, LNAV/VNAV NA
below -15°C (5°F) or above 49°C (120°F).
DME/DME RNP-0.3 NA.

ALSF-2

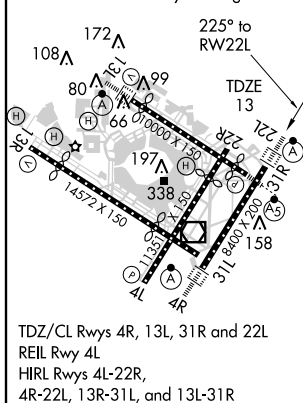


MISSED APPROACH: Climb to 3000
direct FOLER and via 189° track to
CHANT and hold.

ARR	ATIS (NE)	(SW)	NEW YORK APP CON		KENNEDY TOWER		GND CON	CLNC DEL
128.725	117.7	115.4	127.4	269.0	Rwys 4R/22L and 13L/31R	119.1 281.55	121.9 348.6	135.05
DEP					Rwys 4L/22R and 13R/31L	123.9 281.55		
115.1								



ELEV 13	Rwy 13L Idg 9095'
	Rwy 13R Idg 11966'
	Rwy 22R Idg 8655'
	Rwy 31L Idg 11248'
	Rwy 31R Idg 8970'



3000 		FOLER TRK 189°		CHANT 		NAYIK 2000	
 RW22L		*1.5 NM to RW22L		*LNAV only		Procedure Turn NA GS 3.00° TCH 53	
1.5		3.9 NM		6 NM			
CATEGORY		A		B		C	
LPV DA		270/24		257 (300-½)			
LNAV/VNAV DA		420/50		407 (500-1)			
LNAV MDA		560/24 547 (600-½)		560/50 547 (600-1)		560/60 547 (600-1½)	
CIRCLING		640-1 627 (700-1)		640-1½ 627 (700-1½)		640-2 627 (700-2)	

NEW YORK, NEW YORK

Amdt 1A 08269

NEW YORK / JOHN F. KENNEDY INTL (JFK)

40°38'N - 73°47'W

RNAV (GPS) Y RWY 22L

NE-2, 25 SEP 2008 to 23 OCT 2008

NE-2, 25 SEP 2008 to 23 OCT 2008