

AL-610 (FAA)

VOR/DME JFK 115.9 Chan 106	APP CRS 232°	Rwy Idg 8400 TDZE 13 Apt Elev 13
--	------------------------	---

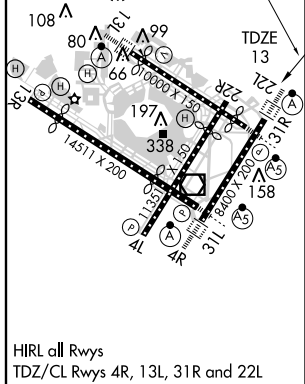
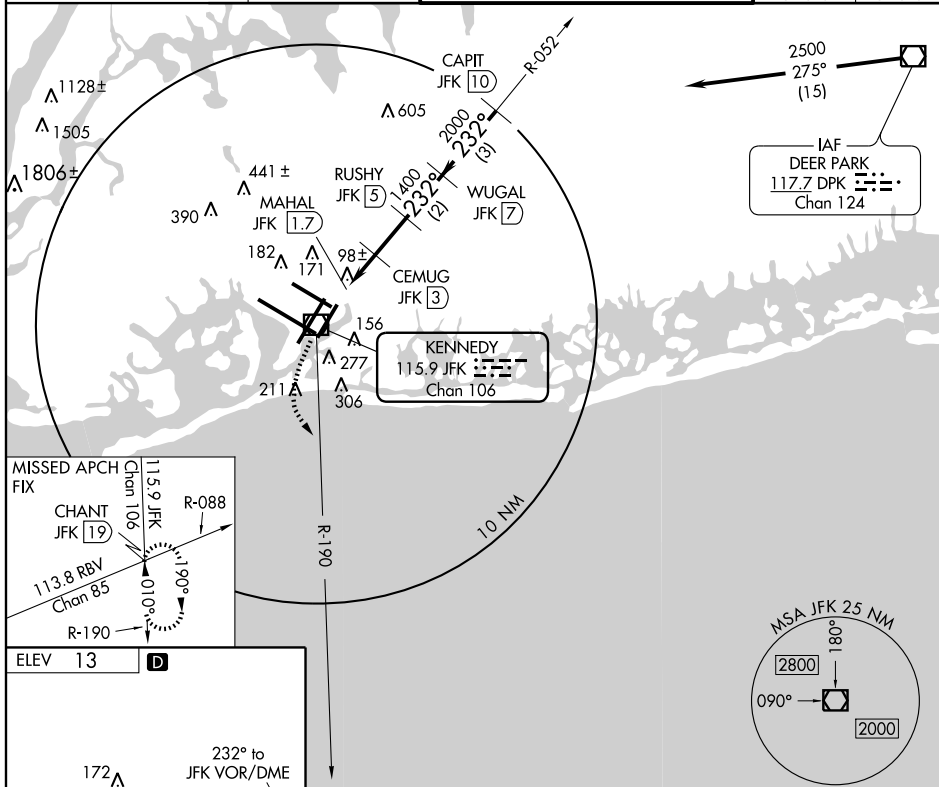
VOR/DME RWY 22L
NEW YORK / JOHN F. KENNEDY INTL (JFK)



ALSF-2

MISSED APPROACH: Climbing left turn to 3000
via JFK R-190 to CHANT INT/19 DME and hold.

ATIS (ARR-NE) (ARR-SW)		NEW YORK APP CON		KENNEDY TOWER		GND CON	CLNC DEL
128.725	117.7	115.4	127.4	269.0	Rwys 4R/22L and 13L/31R Rwys 4L/22R and 13R/31L	119.1 281.55 123.9 281.55	121.9 135.05 348.6 348.6



CATEGORY	A	B	C	D
S-22L	440/24 427 (500-½)		440/40 427 (500-¾)	440/50 427 (500-1)
CIRCLING	640-1 627 (700-1)		640-1¼ 627 (700-1¾)	640-2 627 (700-2)

NEW YORK, NEW YORK
Amdt 4D 10266

NEW YORK / JOHN F. KENNEDY INTL (JFK)
VOR/DME RWY 22L

40°38'N - 73°47'W

NE-2. 23 SEP 2010 to 21 OCT 2010