

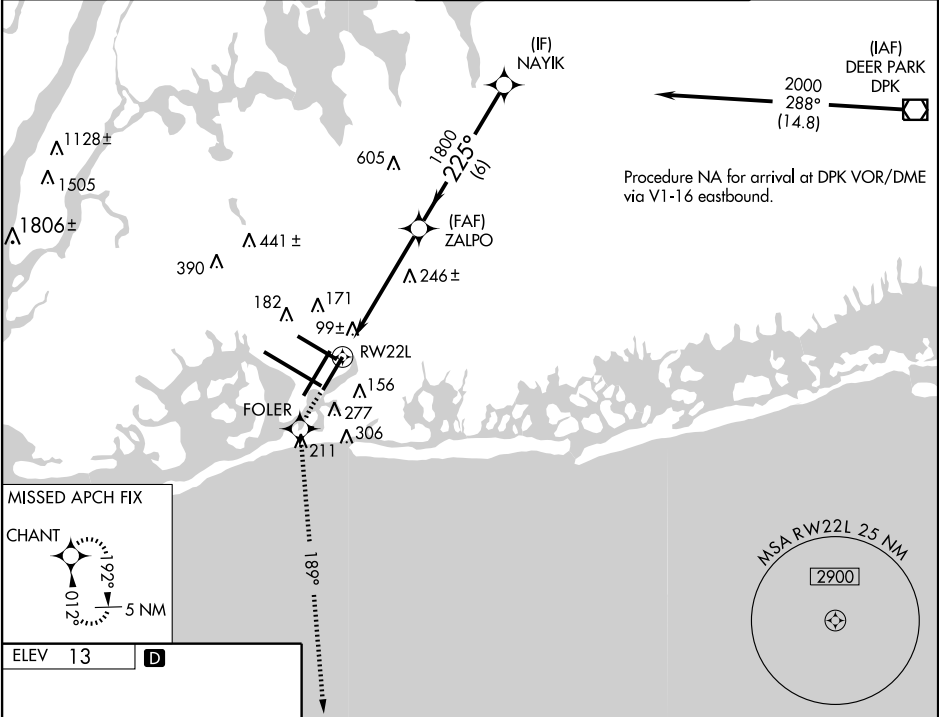


WAAS CH 97318 W22A	APP CRS 225°	Rwy Idg TDZE 13 Apt Elev 13	8400
--	------------------------	---	-------------

RNAV (GPS) Y RWY 22L
NEW YORK / JOHN F. KENNEDY INTL (JFK)

 For uncompensated Baro-VNAV systems, UNAV/VNAV NA below -13°C (8°F) or above 49°C (120°F). DME/DME RNP-0.3 NA.	ALSF-2 	MISSED APPROACH: Climb to 3000 direct FOLER and via 189° track to CHANT and hold.
---	---	---

ATIS (ARR-NE) (ARR-SW) 128.725 117.7 115.4	NEW YORK APP CON 127.4 269.0	KENNEDY TOWER Rwys 4R/22L and 13L/31R 119.1 281.55 Rwys 4L/22R and 13R/31L 123.9 281.55	GND CON 121.9 135.05 348.6	CLNC DEL 135.05 348.6
---	--	---	--	---



HIRL chart for RWY 22L. The chart shows a series of altitudes and distances along the runway. Key features include: 172, 108, 80, 99, 225° to RW22L, 228, 22, 197, 338, 1451 X 200, 1135, 31L, 31R, 158, 4R, 4L, 3000,

NE-2, 23 SEP 2010 to 21 OCT 2010

NE-2, 23 SEP 2010 to 21 OCT 2010