

APP CRS	Rwy Idg	<b>8400</b>
<b>225°</b>	TDZE	<b>13</b>
	Apt Elev	<b>13</b>

# RNAV (RNP) Z RWY 22L

NEW YORK / JOHN F. KENNEDY INTL (JFK)

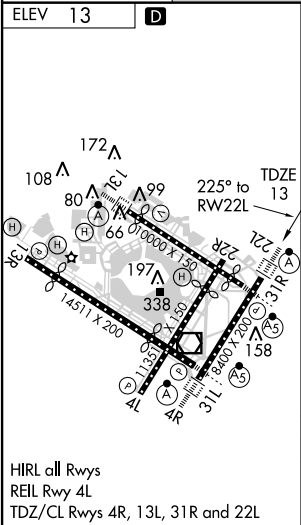
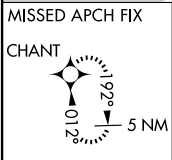
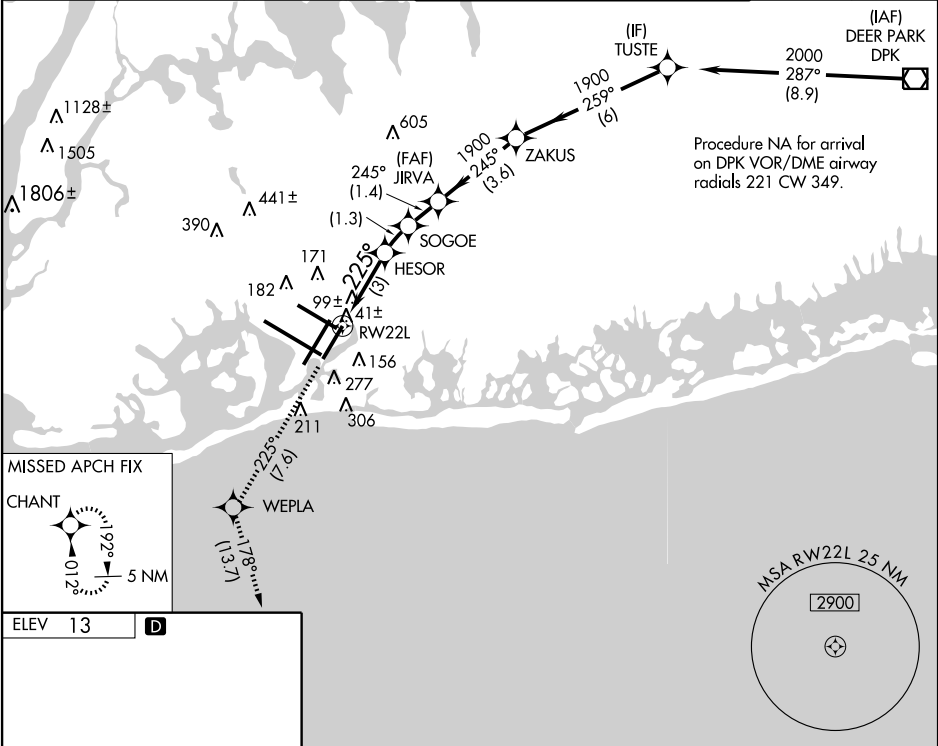
**NA** For uncompensated Baro-VNAV systems, procedure NA below -13°C (8°F) or above 49°C (120°F). RF and GPS Required. For inoperative ALSF, increase RNP 0.20 DA visibility to RVR 5000 all Cats, RNP 0.30 DA visibility to RVR 6000 all Cats. Visibility reduction by helicopters NA.

ALSF-2



**MISSED APPROACH:** Climb to 3000 via 225° track to WEPLA and via 178° track to CHANT and hold.

ATIS (ARR-NE)	(ARR-SW)	NEW YORK APP CON	KENNEDY TOWER	GND CON	CLNC DEL
<b>128.725</b>	<b>117.7</b>	<b>115.4</b>	Rwys 4R/22L and 13L/31R <b>119.1</b> <b>281.55</b> Rwys 4L/22R and 13R/31L <b>123.9</b> <b>281.55</b>	<b>121.9</b> <b>348.6</b>	<b>135.05</b> <b>348.6</b>



3000	tr 225°	WEPLA	tr 178°	CHANT	JIRVA	ZAKUS	TUSTE	Procedure Turn NA
VGSi and RNAV glidepath not coincident.		HESOR		SOGOE	1900	245°	259°	2000
RW22L		1017	1426	1900	245°	259°	1900	GP 3.00° TCH 50
3 NM		1.3 NM	1.4 NM	3.6 NM	6 NM			
CATEGORY	A	B	C	D				
RNP 0.20 DA	339/40 326 (400-¾)							
RNP 0.30 DA	408/50 395 (400-1)							

**SPECIAL AIRCRAFT AND AIRCREW AUTHORIZATION REQUIRED**