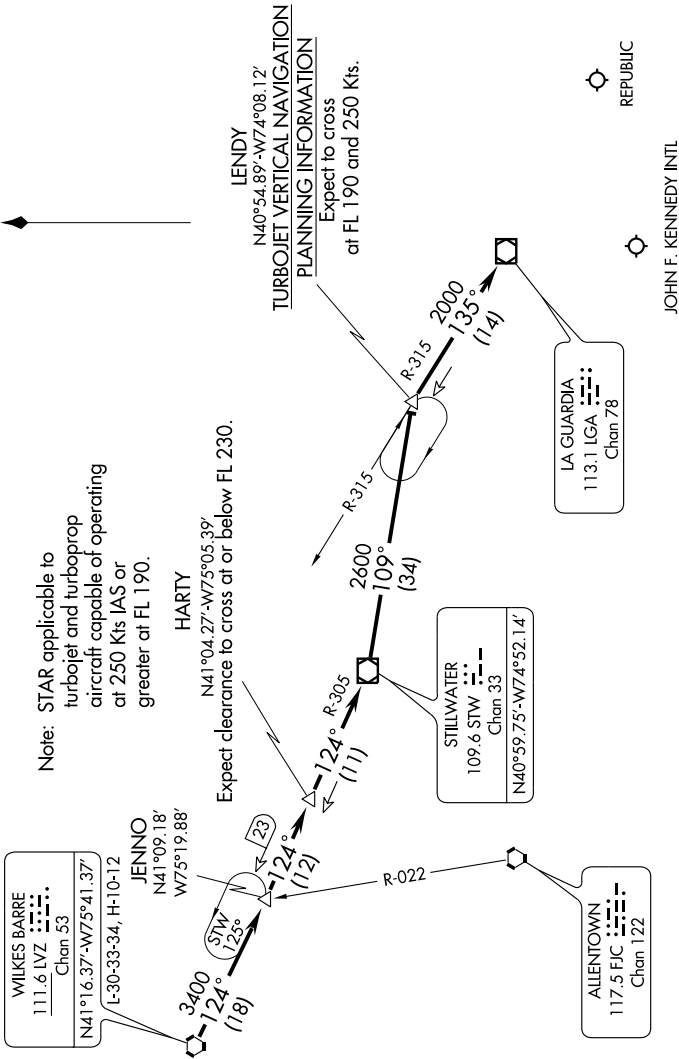


LENDY FIVE ARRIVAL

NEW YORK, NEW YORK

NE-2, 23 SEP 2010 to 21 OCT 2010

NEW YORK APP CON
127.4 269.0
KENNEDY INTL ATIS ARR 128.725
(NE) 117.7 (SW) 115.4
REPUBLIC ATIS
126.65



NOTE: Chart not to scale.

From over LVZ VORTAC via LVZ R-124 and STW R-305 to STW VOR/DME, then from STW VOR/DME via STW R-109 to LENDY INT via LGA R-315 to LGA VOR/DME. Expect radar vectors to final approach course after LGA VOR/DME.

LENDY FIVE ARRIVAL

NEW YORK, NEW YORK

NE-2, 23 SEP 2010 to 21 OCT 2010