

AL-610 (FAA)

LOC/DME 1-HWY 110.9 Chan 46	APP CRS 225°	Rwy Idg 8400 TDZE 13 Apt Elev 13
---	------------------------	---

ILS RWY 22L (CAT III)
NEW YORK/JOHN F. KENNEDY INTL (JFK)

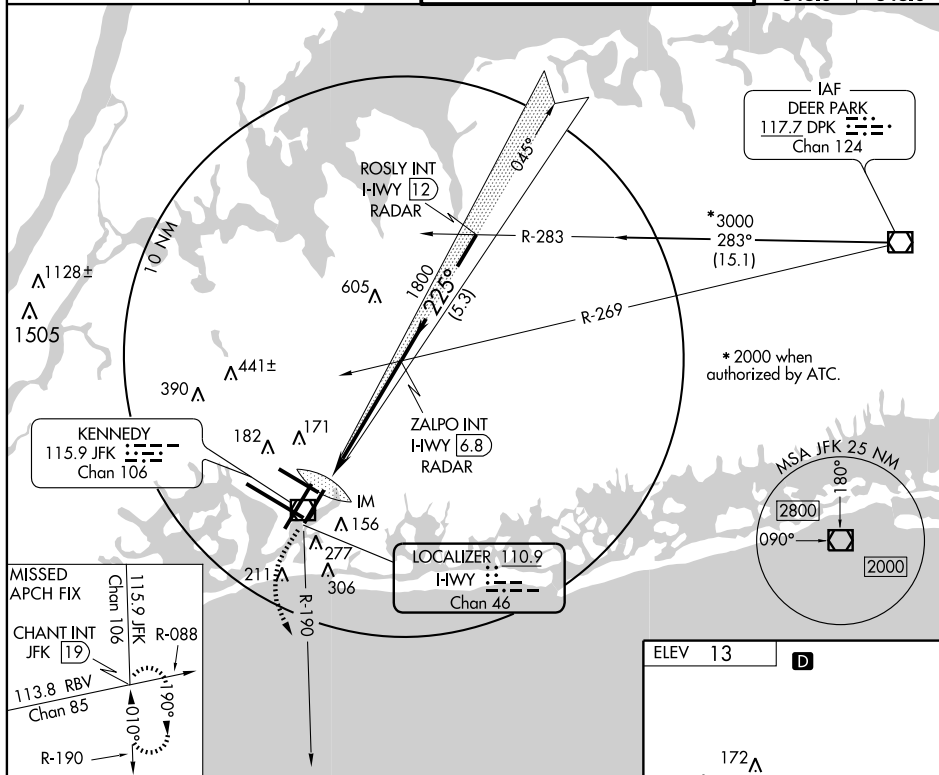


ALSF-2



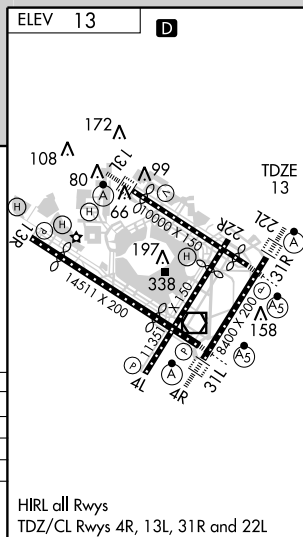
MISSED APPROACH: Climb to 500 then climbing left turn to 3000 via JFK R-190 to CHANT INT/19 DME and hold.

ATIS (ARR-NE) (ARR-SW)			NEW YORK APP CON		KENNEDY TOWER			GND CON	CLNC DEL
128.725	117.7	115.4	127.4	269.0	Rwys 4R/22L and 13L/31R	119.1	281.55	121.9	135.05
					Rwys 4L/22R and 13R/31L	123.9	281.55	348.6	348.6



CATEGORY	A	B	C	D
S-ILS 22L		CAT IIa	RVR 07	
S-ILS 22L		CAT IIb	RVR 06	
S-ILS 22L		CAT IIc	NA	

**CATEGORY III ILS - SPECIAL AIRCREW
& AIRCRAFT CERTIFICATION REQUIRED**



NEW YORK, NEW YORK

Amdt 24A 10266

NEW YORK / JOHN F. KENNEDY INTL (JFK)

40°38'N - 73°47'W

ILS RWY 22L (CAT III)

NE-2, 23 SEP 2010 to 21 OCT 2010

NE-2. 23 SEP 2010 to 21 OCT 2010