

AL-610 (FAA)

VOR/DME JFK 115.9 Chan 106	APP CRS 232°	Rwy Idg 8400 TDZE 13 Apt Elev 13
--	------------------------	---

VOR/DME RWY 22L

NEW YORK / JOHN F. KENNEDY INTL (JFK)

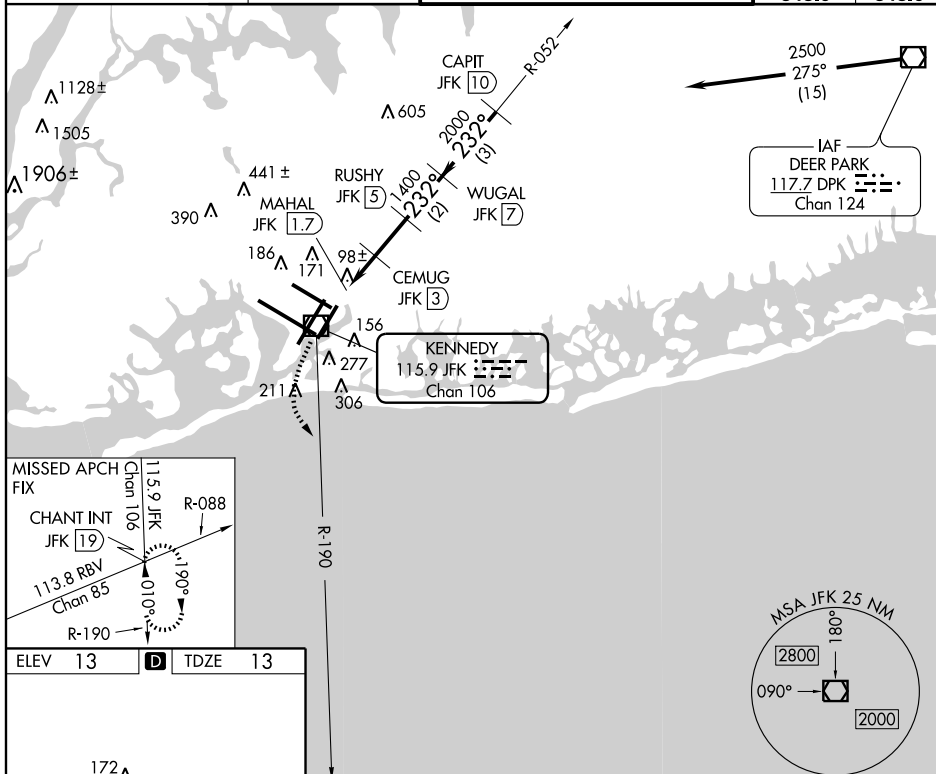


ALSF-2



MISSED APPROACH: Climbing left turn to 3000
via JFK R-190 to CHANT INT/19 DME and hold.

ATIS			NEW YORK APP CON		KENNEDY TOWER			GND CON	CLNC DEL
(ARR-NE)	(ARR-SW)				Rwys 4R/22L and 13L/31R	119.1	281.55	121.9	135.05
128.725	117.7	115.4	127.4	269.0	Rwys 4L/22R and 13R/31L	123.9	281.55	348.6	348.6



ELEV	13	D	TDZE	13
------	----	----------	------	----

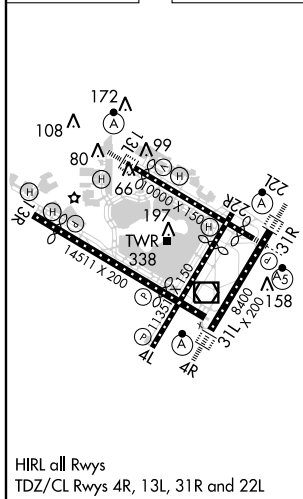


Figure 1 illustrates a procedure turn. The diagram shows a flight path starting from the left, passing through MAHAL JKF (1.7), then a procedure turn at 232° to the right, crossing the 1400 altitude, and continuing to WUGAL JKF (7) and CAPIT JKF (10). The turn is labeled 'Procedure Turn NA'. The diagram also shows the 3000 altitude, VOR/DME, and various distances (0.6, 0.7, 0.6, 2 NM, 3 NM).

NEW YORK, NEW YORK
Amdt 4D 12096

NEW YORK / JOHN F. KENNEDY INTL (JFK)

40°38'N-73°47'W

VOR/DME RWY 22L

NE-2, 20 SEP 2012 to 18 OCT 2012

NE-2. 20 SEP 2012 to 18 OCT 2012