

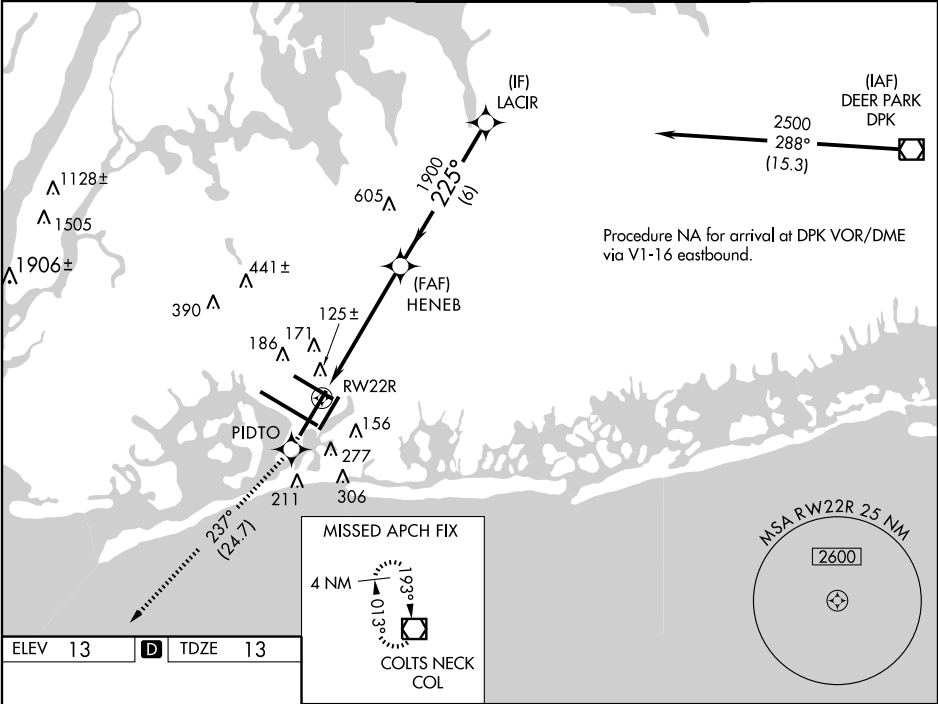
WAAS CH <b>40019</b>	APP CRS <b>225°</b>	Rwy Idg TDZE <b>13</b>	<b>8655</b>
<b>W22B</b>		Apt Elev <b>13</b>	

**RNAV (GPS) RWY 22R**  
NEW YORK / JOHN F. KENNEDY INTL (JFK)

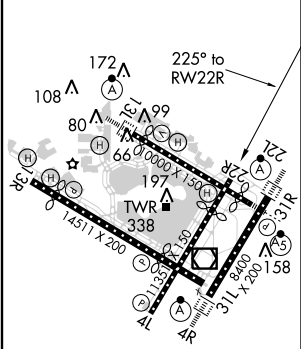
**▼** DME/DME RNP -0.3 NA. Baro-VNAV NA below -15°C (5°F). Simultaneous approach authorized with ILS or LOC Rwy 22L, ILS Rwy 22L (CAT II), ILS Rwy 22L (CAT III), RNAV (GPS) Y Rwy 22L. LNAV procedure NA during simultaneous operations. Use of FD or AP providing RNAV track guidance required during simultaneous operations.

**MISSED APPROACH:** Climb to 4000 direct PIDTO and right turn via 237° track to COL VOR/DME and hold.

ATIS (ARR-NE) (ARR-SW)	NEW YORK APP CON	KENNEDY TOWER Rwys 4R/22L and 13L/31R Rwys 4L/22R and 13R/31L	GND CON	CLNC DEL
<b>128.725 117.7 115.4</b>	<b>127.4 269.0</b>	<b>119.1 281.55</b> <b>123.9 281.55</b>	<b>121.9 348.6</b>	<b>135.05 348.6</b>



ELEV <b>13</b>	<b>D</b>	TDZE <b>13</b>
----------------	----------	----------------



4000

↑

PIDTO

✱

COL

☐

Procedure Turn NA

tr 237°

\*LNAV only

\*1.7 NM to RW22R

RW22R

1.7

4 NM

6 NM

HENEB

225°

1900

2500

GS 3.00° TCH 59

CATEGORY	A	B	C	D
LPV DA	270/40 257 (300-¾)			
LNAV/VNAV DA	480-1½ 467 (500-1½)			
LNAV MDA	600/50	587 (600-1)	600-1½ 587 (600-1½)	600-1¾ 587 (600-1¾)
CIRCLING	640-1½	627 (700-1½)	640-1¾ 627 (700-1¾)	640-2 627 (700-2)

NE-2, 20 SEP 2012 to 18 OCT 2012

NE-2, 20 SEP 2012 to 18 OCT 2012