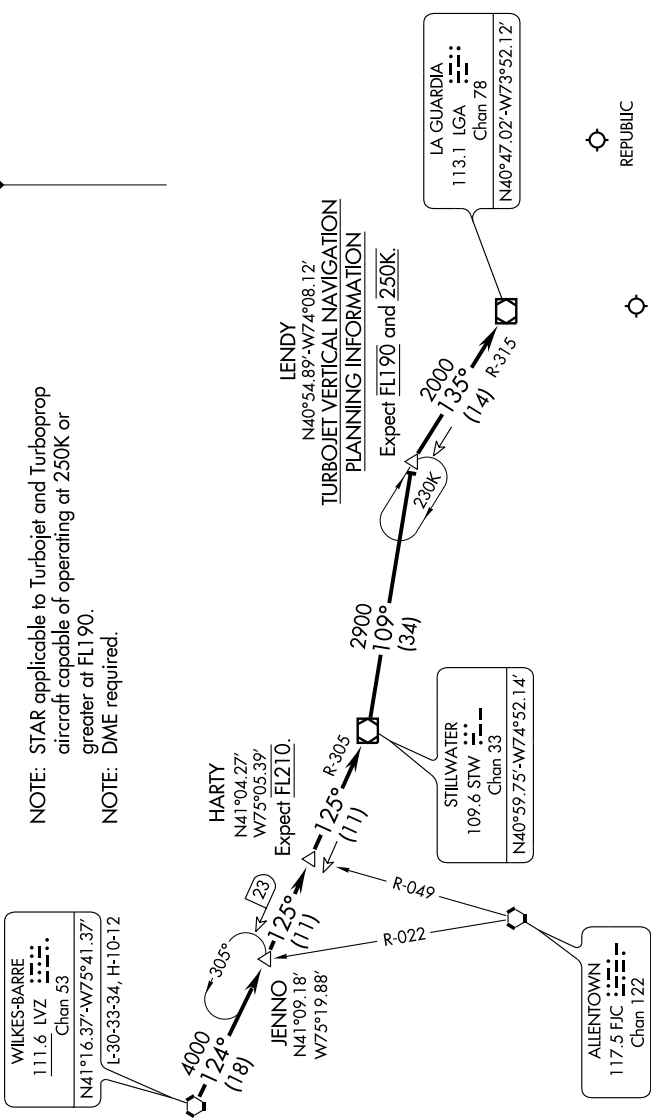


NE-2, 20 SEP 2012 to 18 OCT 2012

NEW YORK APP CON
127.4 269.0
KENNEDY INTL ATIS ARR 128.725
(NE) 117.7 (SW) 115.4
REPUBLIC ATIS
126.65



ARRIVAL ROUTE DESCRIPTION

From over LVZ VORTAC on LVZ R-124 to JENNO, then STW R-305 to HARTY INT, then STW R-305 to STW VOR/DME, then from STW VOR/DME on STW R-109 to LENDY, then on LGA R-315 to LGA VOR/DME. Expect radar vectors to final approach course after LGA VOR/DME.

JOHN F. KENNEDY INTL
REPUBLIC

NOTE: Chart not to scale.