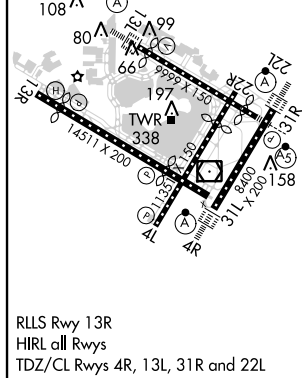
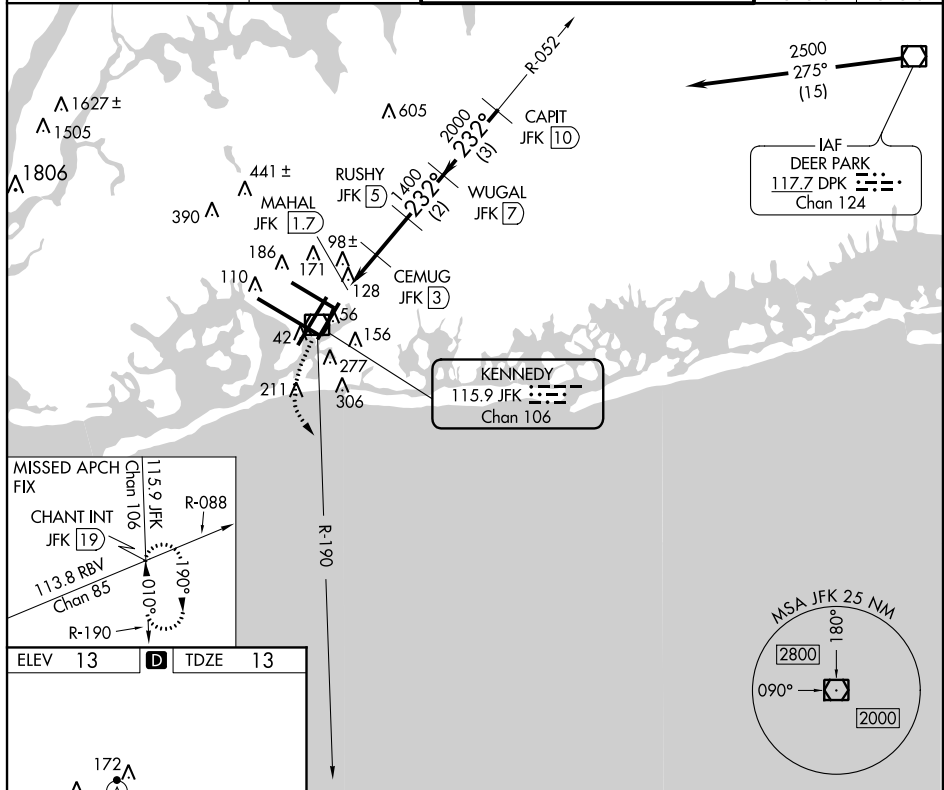


VOR/DME RWY 22L
JOHN F. KENNEDY INTL (JFK)



MISSED APPROACH: Climbing left turn to 3000
via JFK R-190 to CHANT INT/19 DME and hold.

ATIS (ARR-NE) (ARR-SW)			NEW YORK APP CON		KENNEDY TOWER		GND CON	CLNC DEL
128.725	117.7	115.4	128.12	269.0	Rwys 4R/22L and 13L/31R	119.1 281.55	121.9	135.05
					Rwys 4L/22R and 13R/31L	123.9 281.55	348.6	348.6



CATEGORY	A	B	C	D
S-22L	440/24 427 (500-½)		440/40 427 (500-¾)	440/50 427 (500-1)
CIRCLING	640-1 627 (700-1)		640-1¼ 627 (700-1¾)	640-2 627 (700-2)

NE-2, 18 SEP 2014 to 16 OCT 2014