

NEW YORK APP CON
125.7 269.0
KENNEDY INTL ATIS 12
(NE) 117.7
(SW) 115.4

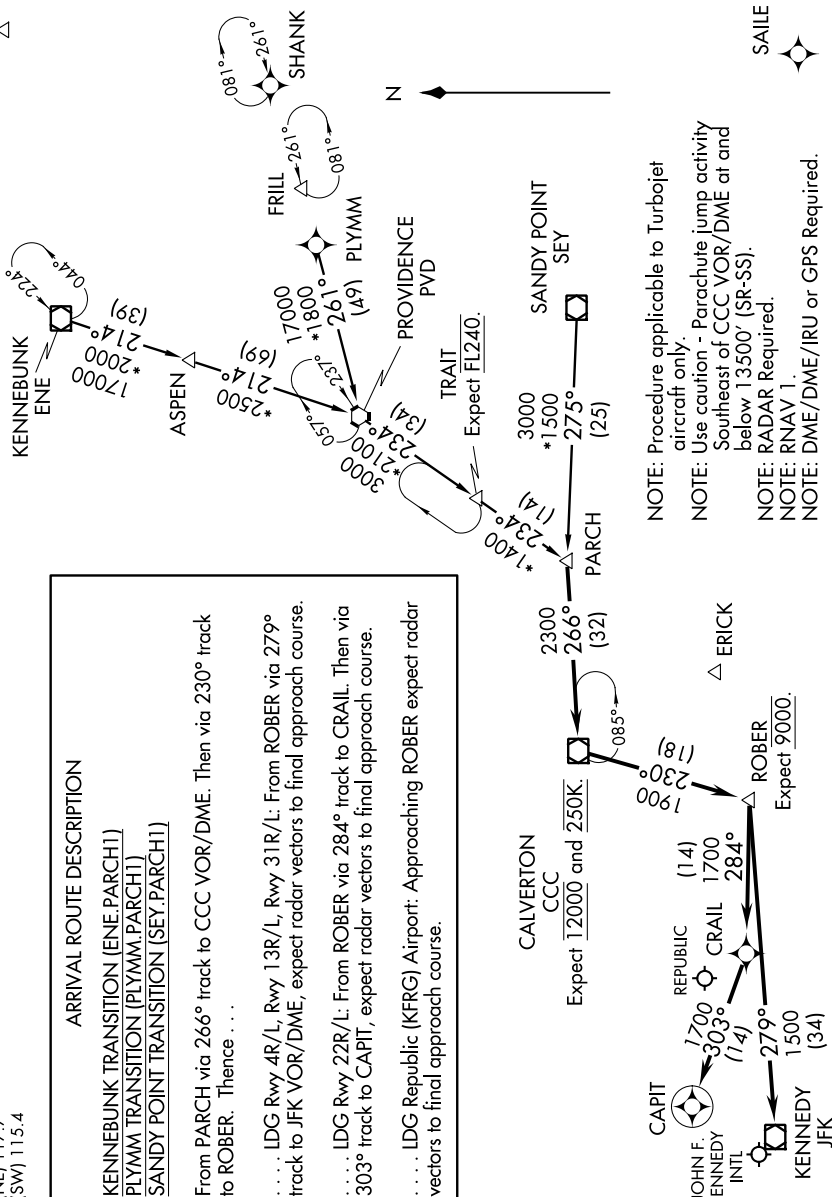
ARRIVAL ROUTE DESCRIPTION

KENNEBUNK TRANSITION (ENE.PARCH1)
PLYMM TRANSITION (PLYMM.PARCH1)
SANDY POINT TRANSITION (SEY.PARCH1)

From PARCH via 266° track to CCC VOR/DME. Then via 230° track to ROBER. Thence . . .

... LDG Rwy 4R/L, Rwy 13R/L, Rwy 31R/L: From ROBER via 279° track to JFK VOR/DME, expect radar vectors to final approach course.

... LDG Republic (KFRG) Airport: Approaching ROBER expect radar vectors to final approach course.



NOTE: Procedure applicable to Turbojet aircraft only.

NOTE: Use caution - Parachute jump activity Southeast of CCC VOR/DME at and below 13500' (SR-SS).

NOTE: RADAR Required.

NOTE: RNAV 1.

NOTE: DME/DME/IRU or GPS Required.

NOTE: Chart not to scale.