

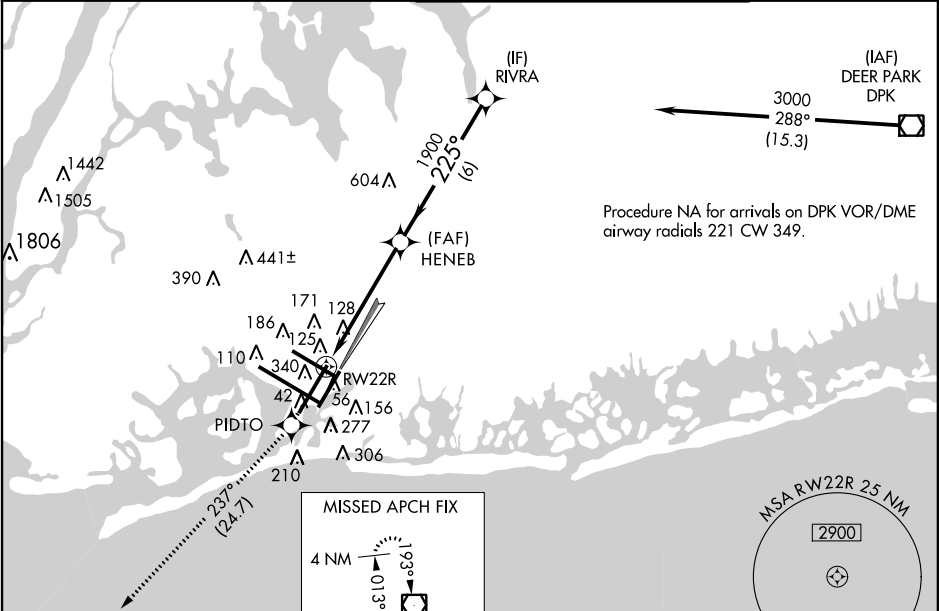
WAAS CH 40019 W22B	APP CRS 225°	Rwy ldg TDZE 12 Apt Elev 13	7795
--	------------------------	---	-------------

RNAV (GPS) RWY 22R
JOHN F KENNEDY INTL (JFK)

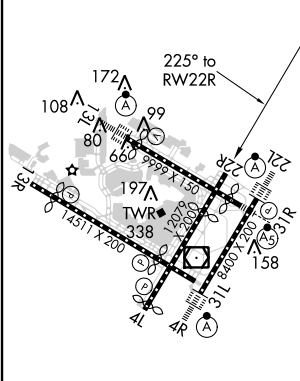
▼ For uncompensated Baro-VNAV systems, LNAV/VNAV NA below -12°C (11°F) or above 54°C (130°F). DME/DME RNP-0.3 NA. Simultaneous approach authorized with ILS or LOC Rwy 22L, ILS Rwy 22L (CAT II), ILS Rwy 22L (CAT III), RNAV (GPS) Y Rwy 22L. LNAV procedure NA during simultaneous operations. Use of FD or AP providing RNAV track guidance required during simultaneous operations.

MISSED APPROACH: Climb to 4000 direct PIDTO and on track 237° to COL VOR/DME and hold.




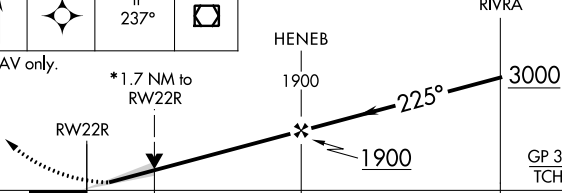
ATIS (ARR-NE) (ARR-SW) 128.725 117.7 115.4	NEW YORK APP CON 128.12 269.0	KENNEDY TOWER Rwys 4R/22L and 13L/31R 119.1 281.55 Rwys 4L/22R and 13R/31L 123.9 281.55	GND CON 121.9 135.05 348.6	CLNC DEL 135.05 348.6
---	---	---	--	---



ELEV 13	D	TDZE 12
---------	----------	---------



RLS Rwy 13R
HIRL all Rwys
TDZ/CL Rwys 4R, 13L, 31R and 22L

4000	PIDTO	COL		
		tr 237°		
*LNAV only.				
				
CATEGORY	A	B	C	D
LPV DA	269/40 257 (300-¾)			
LNAV/VNAV DA	501-1½ 489 (500-1½)			
LNAV MDA	600/50	588 (600-1)	600-1¾ 588 (600-1¾)	
CIRCLING	640-1	627 (700-1)	640-1¾ 627 (700-1¾)	660-2 647 (700-2)

NE-2, 17 SEP 2015 to 15 OCT 2015

NE-2, 17 SEP 2015 to 15 OCT 2015