

NEW YORK APP CON  
125.7 269.0  
KENNEDY INTL ATIS 12  
(NE) 117.7  
(SW) 115.4

## ARRIVAL ROUTE DESCRIPTION

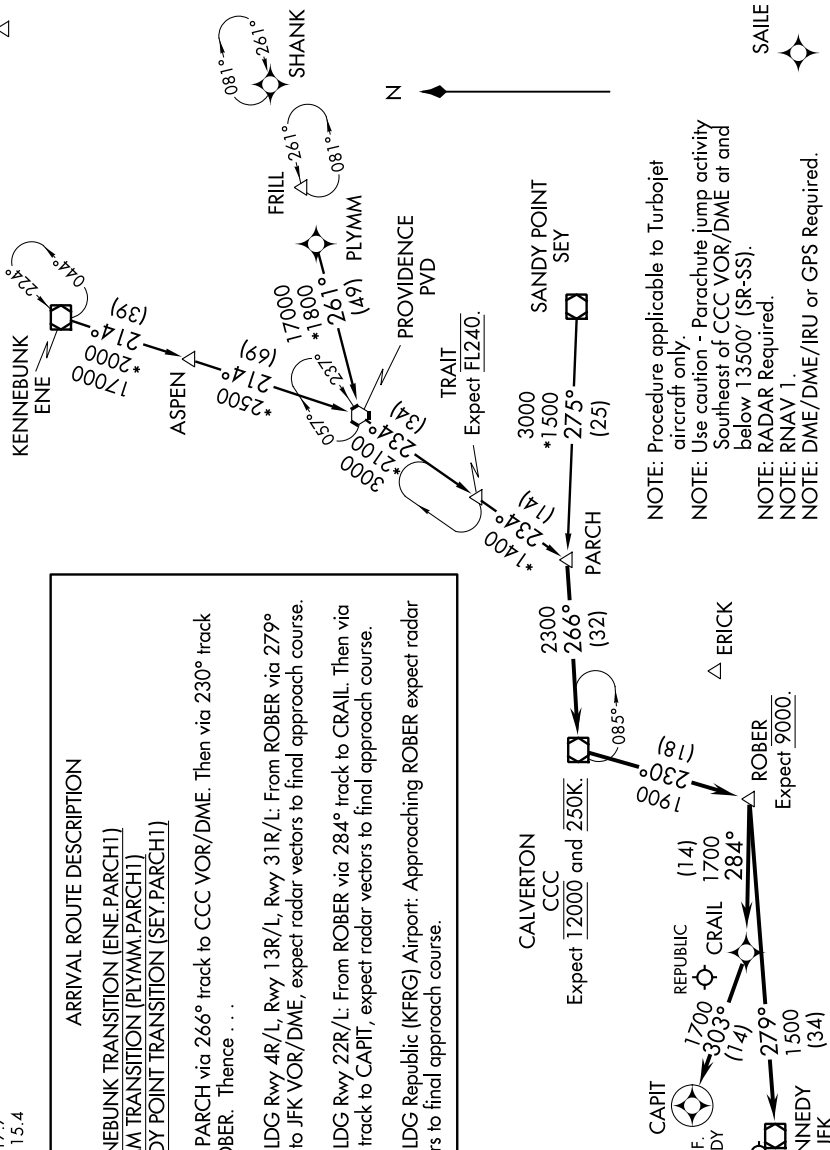
KENNEBUNK TRANSITION (ENE.PARCH1)  
PLYMM TRANSITION (PLYMM.PARCH1)  
SANDY POINT TRANSITION (SEY.PARCH1)

From PARCH via 266° track to CCC VOR/DME. Then via 230° track to ROBER. Thence . . .

... LDG Rwy 4R/L, Rwy 13R/L, Rwy 31R/L: From ROBER via 279° track to JFK VOR/DME, expect radar vectors to final approach course.

... LDG Rwy 22R/L: From ROBER via 284° track to CRALL. Then via 330° track to CAPIT, expect radar vectors to final approach course.

... LDG Republic (KFRG) Airport: Approaching ROBER expect radar vectors to final approach course.



**NOTE:** Procedure applicable to Turbojet aircraft only.

**NOTE:** Use caution - Parachute jump activity Southeast of CCC VOR/DME at and below 13500' (SR-SS).

NOTE: RADAR Required.

NOTE: RNAV 1.

NOTE: DME/DME/IRU or GPS Required.

NOTE: Chart not to scale.