

APP CRS	Rwy Idg	8400
225°	TDZE	12
	Apt Elev	14

RNAV (RNP) Z RWY 22L

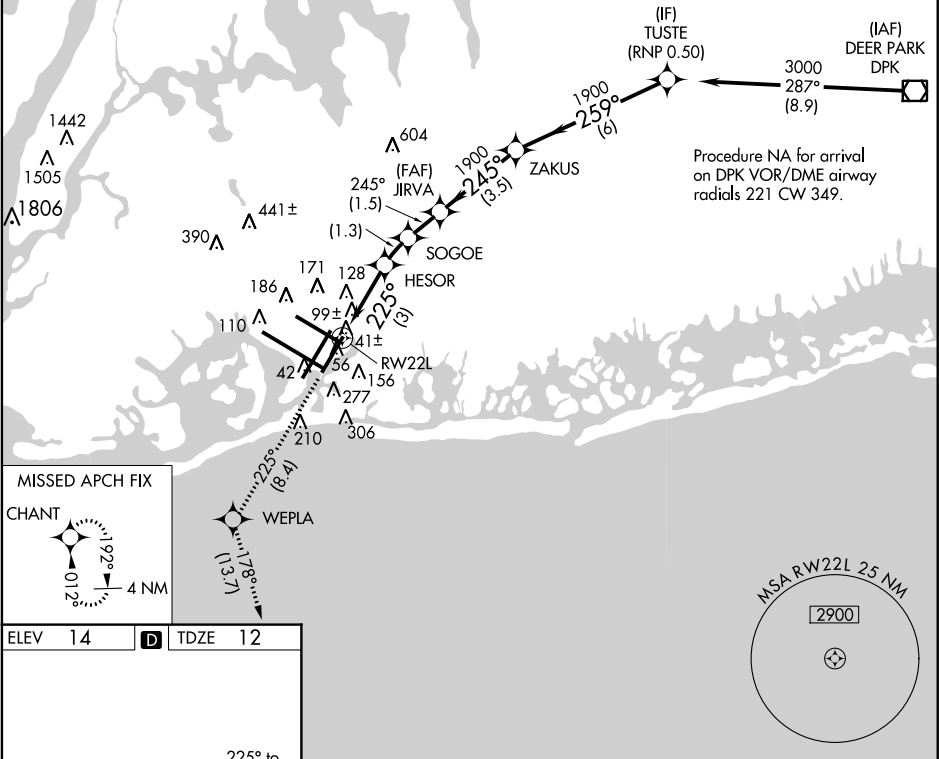
JOHN F KENNEDY INTL (JFK)

For uncompensated Baro-VNAV systems, procedure NA below -12°C (11°F) or above 54°C (130°F). RF required. GPS required. Simultaneous operations authorized. Use of FD or AP providing RNAV track guidance required during simultaneous operations. For inop ALSF, increase RNP 0.20 and RNP 0.30 all Cats visibility to RVR 6000.

ALSF-2

MISSED APPROACH: Climb to 3000 on track 225° to WEPLA and on track 178° to CHANT and hold.

ATIS (ARR-NE) (ARR-SW)			NEW YORK APP CON		KENNEDY TOWER		GND CON	CLNC DEL	CPDLC
128.725	117.7	115.4	128.12	269.0	Rwys 4R/22L and 13L/31R	119.1 281.55	121.9	135.05	
					Rwys 4L/22R and 13R/31L	123.9 281.55	348.6	348.6	



REIL Rwy 4L
RLLS Rwy 13R
HIRL all Rwys
TDZ/CL Rwys 4R, 13L, 31R and 22L

3000

tr 225°

WEPLA

tr 178°

CHANT

VGSI and RNAV glidepath not coincident (VGSI Angle 3.00/TCH 66).

	JIRVA	ZAKUS	TUSTE
	1900	1900	3000
	245°	259°	
	1900		
	225°		
	1019	1429	
	HESOR	SOGOE	
	1019	1429	
	1900	1900	
	225°	245°	259°
	3 NM	1.3 NM	1.5 NM
	3.5 NM	6 NM	

CATEGORY	A	B	C	D
RNP 0.20 DA		316/40	304 (400-¾)	
RNP 0.30 DA		405/40	393 (400-¾)	

GP 3.00°
TCH 50

AUTHORIZATION REQUIRED