

WAAS CH 40019 W22B	APP CRS 225°	Rwy ldg 7795 TDZE 12 Apt Elev 13
--	------------------------	---

RNAV (GPS) RWY 22R

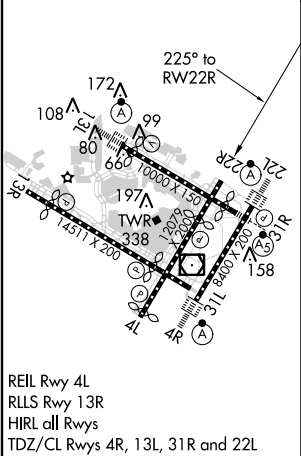
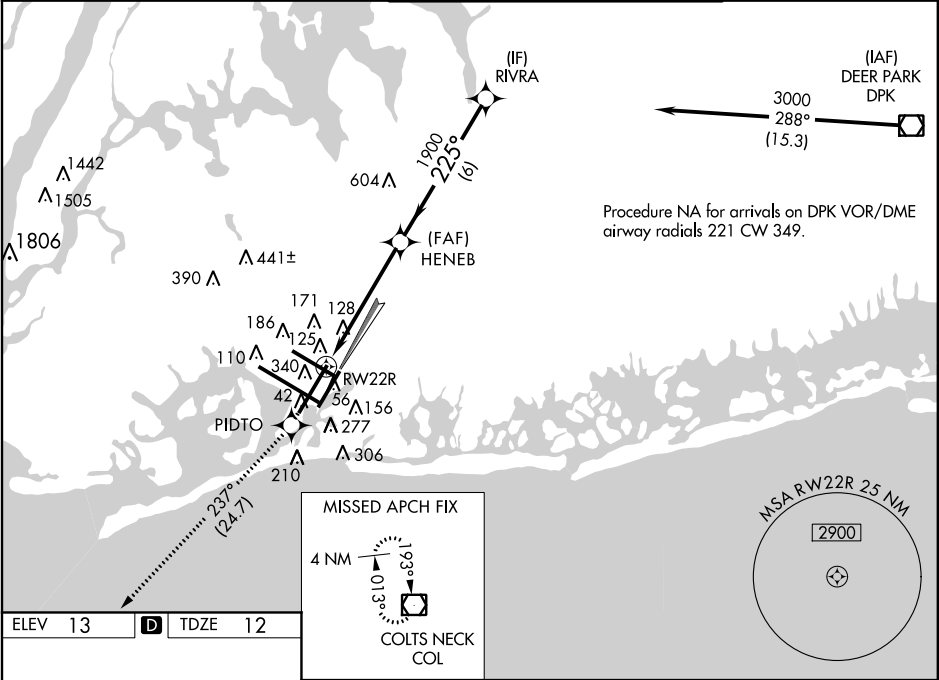
JOHN F KENNEDY INTL (JFK)

▼

For uncompensated Baro-VNAV systems, LNAV/VNAV NA below -12°C (11°F) or above 54°C (130°F). DME/DME RNP-0.3 NA. Simultaneous approach authorized. LNAV procedure NA during simultaneous operations. Use of FD or AP providing RNAV track guidance required during simultaneous operations.

MISSED APPROACH:
Climb to 4000 direct
PIDTO and on track 237°
to COL VOR/DME and hold.

ATIS (ARR-NE) (ARR-SW)			NEW YORK APP CON		KENNEDY TOWER		GND CON	CLNC DEL	CPDLC
128.725	117.7	115.4	128.12	269.0	Rwys 4R/22L and 13L/31R Rwys 4L/22R and 13R/31L	119.1 281.55 123.9 281.55	121.9 348.6	135.05 348.6	



4000 PIDTO		COL	
↑		tr 237°	
*LNAV only.		*1.7 NM to RW22R	
RW22R		HENEB	
1.7 NM		4 NM	
CATEGORY		RWY 22R	
LPV DA		269/40 257 (300-¾)	
LNAV/VNAV DA		501-1½ 489 (500-1½)	
LNAV MDA		600/50 588 (600-1) 600-1¾ 588 (600-1¾)	
CIRCLING		640-1 627 (700-1) 640-1¾ 627 (700-1¾) 660-2 647 (700-2)	