

WAAS CH <b>97318</b> <b>W22A</b>	APP CRS <b>224°</b>	Rwy Idg <b>8400</b> TDZE <b>12</b> Apt Elev <b>13</b>
--	------------------------	---

RNAV (GPS) Y RWY 22L

JOHN F KENNEDY INTL (JFK)

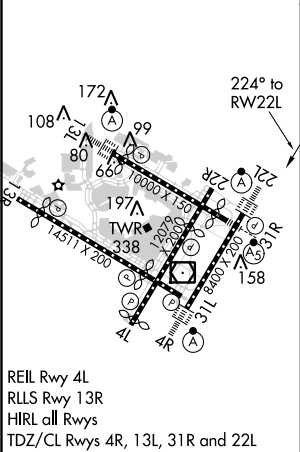
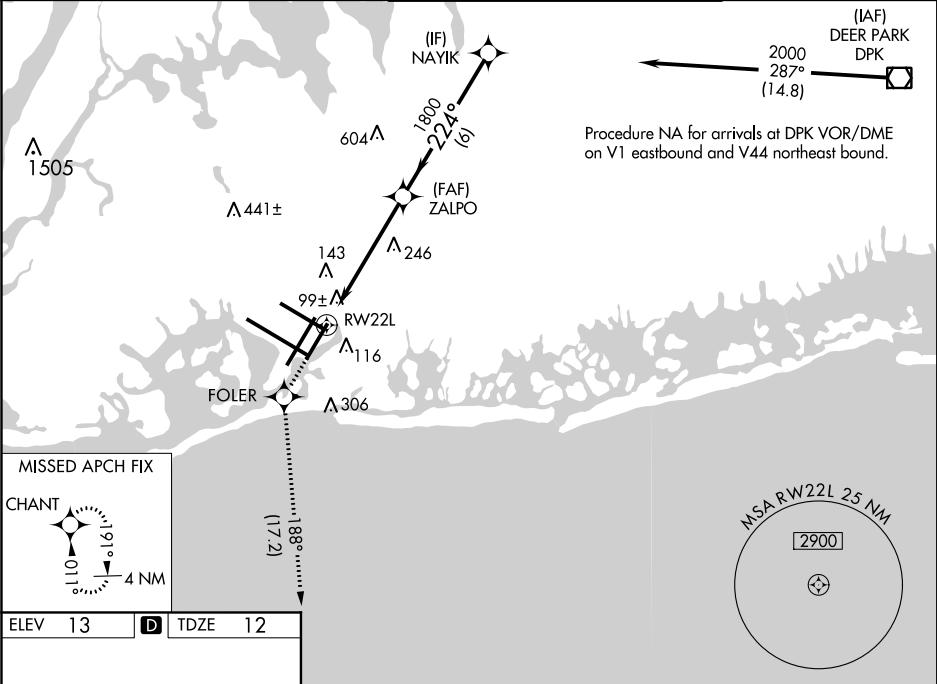
RNAV APCH.

▼ For uncompensated Baro-VNAV systems, LNAV/VNAV NA below -13°C (8°F) or above 54°C (130°F). Simultaneous approach authorized. LNAV procedure NA during simultaneous operations. Use of FD or AP providing RNAV track guidance required during simultaneous operations.

ALSIF-2

MISSED APPROACH: Climb to 3000 direct FOLER and on track 188° to CHANT and hold.

D-ATIS (ARR/DEP) (ARR-NE) (ARR-SW)			NEW YORK APP CON		KENNEDY TOWER		GND CON	CLNC DEL	CPDLC
128.725	117.7	115.4	128.125	269.0	Rwys 4R/22L and 13L/31R	119.1 281.55	121.9	135.05	
					Rwys 4L/22R and 13R/31L	123.9 281.55	348.6	348.6	



3000	FOLER	tr 188°	CHANT	VGSI and RNAV glidepath not coincident (VGSI Angle 3.00/TCH 66).	
*LNAV only.		*1.5 NM to RW22L	ZALPO	NAYIK	2000
RW22L		1.5	3.9 NM	6 NM	GP 3.00° TCH 53
CATEGORY	A	B	C	D	
LPV DA	269/18		257 (300-½)		
LNAV/VNAV DA	419/50		407 (500-1)		
LNAV MDA	560/24	548 (600-½)	560/60	548 (600-1¼)	
CIRCLING	640-1	627 (700-1)	640-1¾ 627 (700-1¾)	660-2 647 (700-2)	