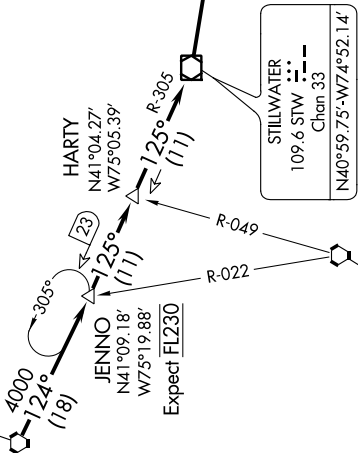


NE-2, 13 SEP 2018 to 11 OCT 2018

NEW YORK APP CON
128.125 269.0
JOHN F KENNEDY INTL D-ATIS
128.725 (ARR/DEP)
117.7 (ARR-NE)
115.4 (ARR-SW)
REPUBLIC ATIS
126.65

WILKES-BARRE
111.6 LVZ
Chan 53
N41°16.37'-W75°41.37'
E-30-33-34, H-10-12



LENDY
N40°54.89'-W74°08.12'
TURBOJET VERTICAL NAVIGATION
PLANNING INFORMATION
Expect FL190 and 250K

STILLWATER
109.6 STW
Chan 33
N40°59.75'-W74°52.14'

LA GUARDIA
113.1 LGA
Chan 78
N40°47.02'-W73°52.12'

REPUBLIC
JOHN F KENNEDY INTL

ARRIVAL ROUTE DESCRIPTION

From over LVZ VORTAC on LVZ R-124 to JENNO, then STW R-305 to HARTY INT, then STW R-305 to STW VOR/DME, then from STW VOR/DME on STW R-109 to LENDY, then on LGA R-315 to LGA VOR/DME. Expect radar vectors to final approach course after LGA VOR/DME.

NOTE: Chart not to scale.

NE-2, 13 SEP 2018 to 11 OCT 2018