

LOC/DME F-JOC 109.5 Chan 32	APP CRS 221°	Rwy Idg 7795 TDZE 13 Apt Elev 13
---	------------------------	---

ILS or LOC RWY 22R

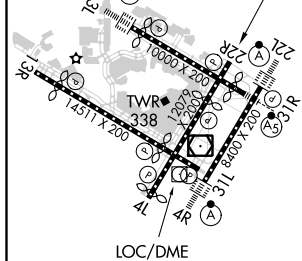
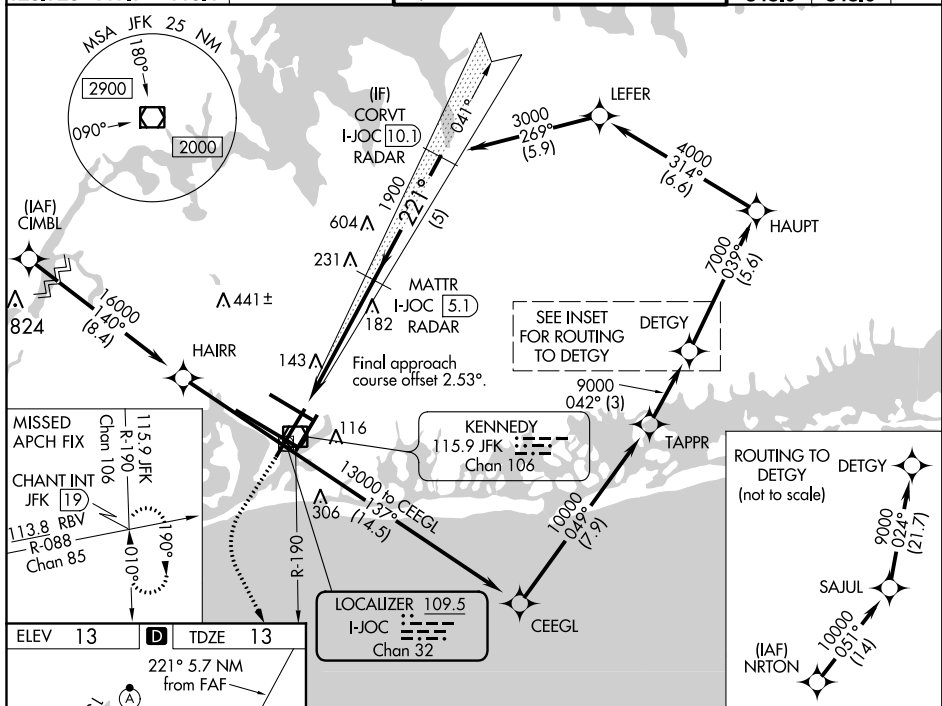
JOHN F KENNEDY INTL (JFK)

RNAV 1-GPS or RADAR required for procedure entry.
From CIMBL, NRTON: RNAV 1-GPS required. DME or RADAR required.

MISSED APPROACH: Climb to 2000 then climbing left turn to 4000 on JFK VOR/DME R-190 to CHANT INT and hold.

T Simultaneous approach authorized.

D-ATIS (ARR/DEP) (ARR-NE) (ARR-SW)			NEW YORK APP CON		KENNEDY TOWER		GND CON	CLNC DEL	CPDLC
128.725	117.7	115.4	128.125	269.0	Rwys 4R/22L and 13L/31R Rwys 4L/22R and 13R/31L	119.1 281.55 123.9 281.55	121.9 348.6	135.05 348.6	



REIL Rwy 4L
RLLS Rwy 13L and 13R
HIRL all Rwy
TDZ/CL Rwy 4L, 4R, 13L, 22L and 31R

FAF to MAP 5.7 NM					
Knots	60	90	120	150	180
Min:Sec	5:42	3:48	2:51	2:17	1:54

NEW YORK, NEW YORK

Amdt 3A 21MAY20

2000	4000	CHANT INT
↑	JFK R-190	

VGS1 and ILS glidepath not coincident (VGS1 Angle 3.00/TCH 77).

MATTR I-JOC 5.1 RADAR

CORVT I-JOC 10.1 RADAR

1900

221°

3000

GS 3.00° TCH 59'

CATEGORY	A	B	C	D
S-ILS 22R	263/40 250 (300-¾)			
S-LOC 22R	460/55	447 (500-1)	460-1⅓ ₈	447 (500-1⅓ ₈)
C CIRCLING	640-1	627 (700-1)	680-1⅓ ₄ 667 (700-1⅓ ₄)	680-2 667 (700-2)

JOHN F KENNEDY INTL (JFK)

ILS or LOC RWY 22R

40°38'N-73°47'W

NE-2, 10 SEP 2020 to 08 OCT 2020

NE-2, 10 SEP 2020 to 08 OCT 2020