

AL-610 (FAA)

WAAS CH 97318 W22A	APP CRS 225°	Rwy Idg 8400 TDZE 13 Apt Elev 13
--	------------------------	---

RNAV (GPS) RWY 22L

NEW YORK / JOHN F. KENNEDY INTL (JFK)

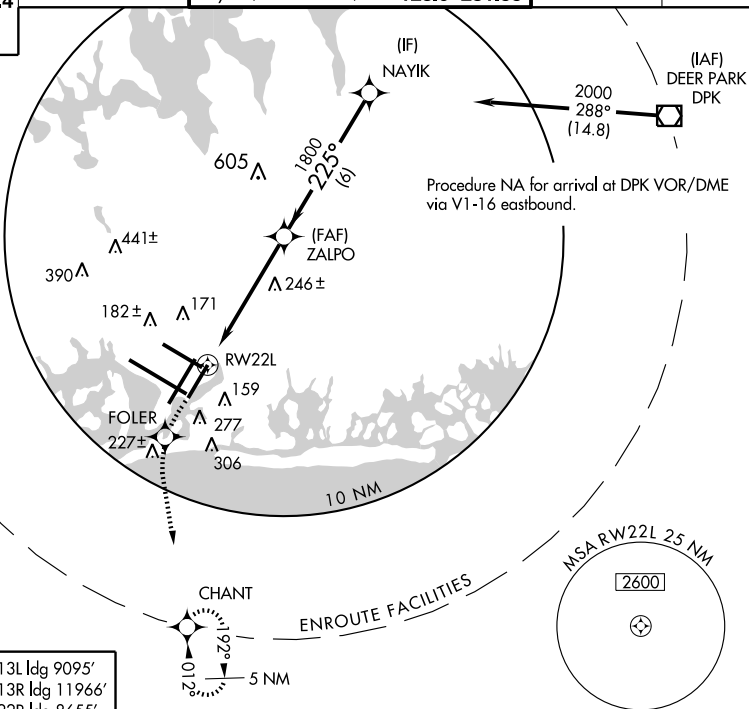


DME/DME RNP -0.3 NA. Baro-VNAV NA
below -15°C (5°F). For inoperative ALSF-2,
increase LPV all CAT's visibility to RVR 4000.

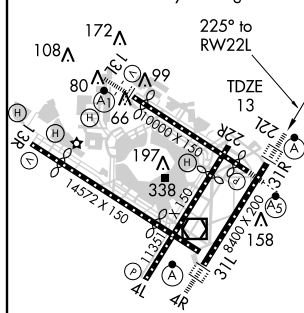


MISSED APPROACH: Climb to 3000 direct FOLER and via 189° track to CHANT and hold.

ARR	ATIS (NE)	(SW)	NEW YORK APP CON		KENNEDY TOWER		GND CON	CLNC DEL
128.725	117.7	115.4	127.4	269.0	Rwys 4R/22L and 13L/31R	119.1 281.55	121.9 348.6	135.05
DEP					Rwys 4L/22R and 13R/31L	123.9 281.55		
115.1								



ELEV 13	Rwy 13L Idg 9095'
	Rwy 13R Idg 11966'
	Rwy 22R Idg 8655'
	Rwy 31L Idg 11248'
	Rwy 31R Idg 8970'



TDZ/CL Rwy 4R, 13L, 31R and 22L
REIL Rwy 4L
HIRL Rwy 4L-22R,
4R-22L, 13R-31L, and 13L-31R

3000 ↑	FOLER 	TRK 189° 	CHANT 	NAYIK
CATEGORY	A	B	C	D
LPV DA	270/24 257 (300-½)			
RNAV/ VNAV DA	420/50 407 (500-1)			
RNAV MDA	560/24 547 (600-½)	560/50 547 (600-1)	560/60 547 (600-1¼)	
CIRCLING	640-1½ 627 (700-1½)	640-1¾ 627 (700-1¾)	640-2 627 (700-2)	

NEW YORK, NEW YORK

Amdt 1 07046

NEW YORK / JOHN F. KENNEDY INTL (JFK)

40°38'N - 73°47'W

RNAV (GPS) RWY 22L

NE-2, 30 AUG 2007 to 27 SEP 2007

NE-2. 30 AUG 2007 to 27 SEP 2007