

LOC/DME 1-HWY <b>110.9</b> Chan <b>46</b>	APP CRS <b>225°</b>	Rwy Idg <b>8400</b> TDZE <b>13</b> Apt Elev <b>13</b>
---	------------------------	---

## ILS RWY 22L

NEW YORK / JOHN F. KENNEDY INTL (JFK)



**MISSED APPROACH:** Climb to 500 then climbing left turn to 3000 via JFK R-190 to CHANT Int/19 DME and hold.

ARR	ATIS (NE)	(SW)	NEW YORK APP CON		KENNEDY TOWER		GND CON	CINC DEL
128.725	117.7	115.4	127.4	269.0	Rwys 4R/22L and 13L/31R	119.1 281.55	121.9 348.6	135.05
DEP					Rwys 4L/22R and 13R/31L	123.9 281.55		
115.1								

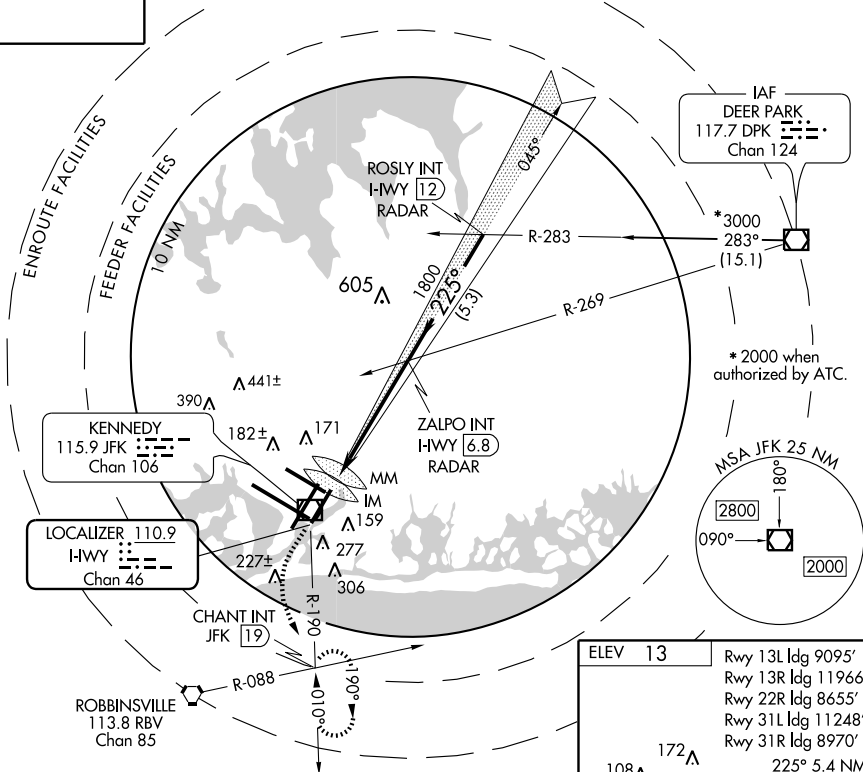


Diagram illustrating the S-ILS 22L approach procedure, showing the 3000' final approach segment, 1800' intermediate segment, and 1800' initial segment. The diagram includes the 225° heading and the 2000' altitude when authorized by ATC. The diagram is divided into four categories: A, B, C, and D.

CATEGORY	A	B	C	D
S-ILS 22L	213/18	200 (200-½)		
S-LOC 22L	420/24 407 (500-½)	420/40 407 (500-¾)		
CIRCLING	640-1 627 (700-1)	640-1¾ 627 (700-1¾)	640-2 627 (700-2)	

