

NEW YORK, NEW YORK

AL-610 (FAA)

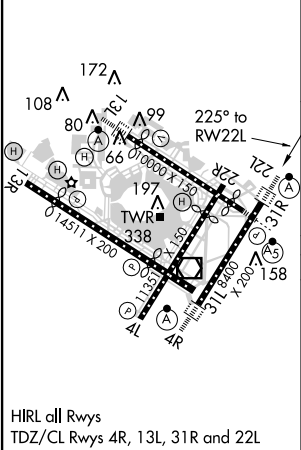
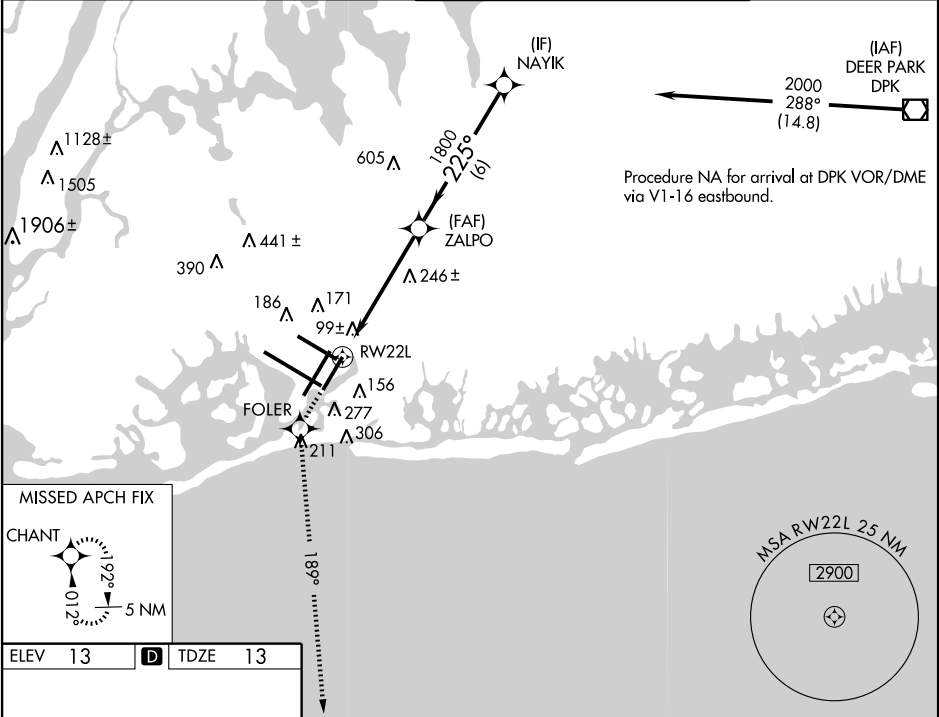
WAAS CH <b>97318</b> <b>W22A</b>	APP CRS <b>225°</b>	Rwy Idg TDZE <b>13</b> Apt Elev <b>13</b>	<b>8400</b>
--	------------------------	---	-------------

# RNAV (GPS) Y RWY 22L

NEW YORK / JOHN F. KENNEDY INTL (JFK)

<b>▼</b> For uncompensated Baro-VNAV systems, LNAV/VNAV NA below -13°C (8°F) or above 49°C (120°F). DME/DME RNP-0.3 NA.	ALSF-2 	MISSED APPROACH: Climb to 3000 direct FOLER and via 189° track to CHANT and hold.
--	------------	---

ATIS (ARR-NE) (ARR-SW) <b>128.725 117.7 115.4</b>	NEW YORK APP CON <b>127.4 269.0</b>	KENNEDY TOWER Rwys 4R/22L and 13L/31R <b>119.1 281.55</b> Rwys 4L/22R and 13R/31L <b>123.9 281.55</b>	GND CON <b>121.9 135.05</b> <b>348.6</b>	CLNC DEL <b>135.05</b> <b>348.6</b>
---	--	---	--	---



3000	FOLER	tr 189°	CHANT	VGSI and RNAV glidepath not coincident (VGSI Angle 3.00/TCH 66).
<b>*LNAV only</b>				
<b>*1.5 NM to RWY 22L</b>				
RWY 22L				
ZALPO				
NAYIK				
2000				
Procedure Turn NA				
GS 3.00°				
TCH 53				
CATEGORY	A	B	C	D
LPV DA	270/24 257 (300-½)			
LNAV/VNAV DA	420/50 407 (500-1)			
LNAV MDA	560/24 547 (600-½)	560/50 547 (600-1)	560/60 547 (600-1½)	
CIRCLING	640-1 627 (700-1)	640-1¾ 627 (700-1¾)	640-2 627 (700-2)	

NEW YORK, NEW YORK  
Amdt 1B 11237

NEW YORK / JOHN F. KENNEDY INTL (JFK)  
40°38'N-73°47'W  
**RNAV (GPS) Y RWY 22L**

NE-2, 25 AUG 2011 to 22 SEP 2011

NE-2, 25 AUG 2011 to 22 SEP 2011