

APP CRS	Rwy Idg	<b>8400</b>
<b>225°</b>	TDZE	<b>13</b>
	Apt Elev	<b>13</b>

# RNAV (RNP) Z RWY 22L

NEW YORK / JOHN F. KENNEDY INTL (JFK)

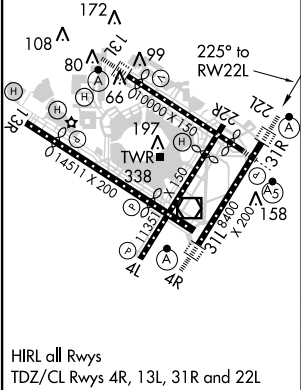
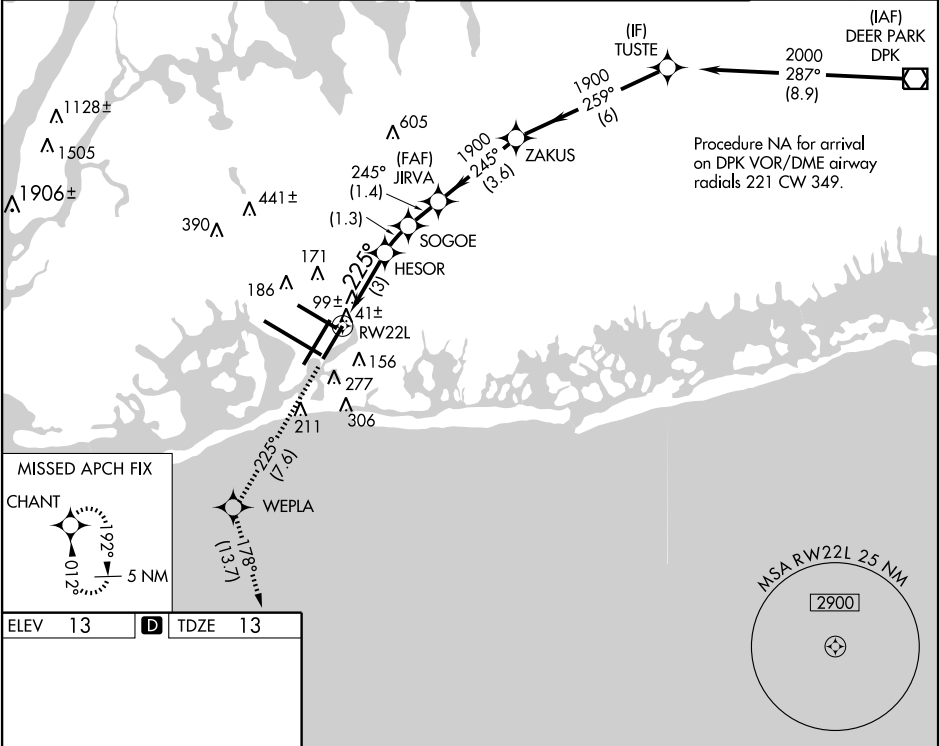
**NA**

For uncompensated Baro-VNAV systems, procedure NA below -13°C (8°F) or above 49°C (120°F). RF and GPS Required. For inoperative ALSF, increase RNP 0.20 DA visibility to RVR 5000 all Cats, RNP 0.30 DA visibility to RVR 6000 all Cats. Visibility reduction by helicopters NA.

ALSF-2

**MISSED APPROACH:** Climb to 3000 via 225° track to WEPLA and via 178° track to CHANT and hold.

ATIS (ARR-NE)	(ARR-SW)	NEW YORK APP CON	KENNEDY TOWER Rwys 4R/22L and 13L/31R	Rwys 4L/22R and 13R/31L	GND CON	CLNC DEL
<b>128.725</b>	<b>117.7</b>	<b>115.4</b>	<b>127.4</b>	<b>269.0</b>	<b>119.1 281.55</b> <b>123.9 281.55</b>	<b>121.9 135.05</b> <b>348.6 348.6</b>



ELEV	13	TDZE	13
<b>HIRL all Rwys</b> TDZ/CL Rwys 4R, 13L, 31R and 22L			
3000	tr 225°	WEPLA	tr 178°
VGSi and RNAV glidepath not coincident (VGSi Angle 3.00/TCH 66).			
TUSTE			
JIRVA			
ZAKUS			
SOGOIE			
HESOR			
RW22L			
1900			
1900			
1900			
2000			
Procedure Turn NA			
GP 3.00°			
TCH 50			
3 NM 1.3 NM 1.4 NM 3.6 NM 6 NM			
CATEGORY	A	B	C
RNP 0.20 DA	339/40 326 (400-¾)		
RNP 0.30 DA	408/50 395 (400-1)		
D			