

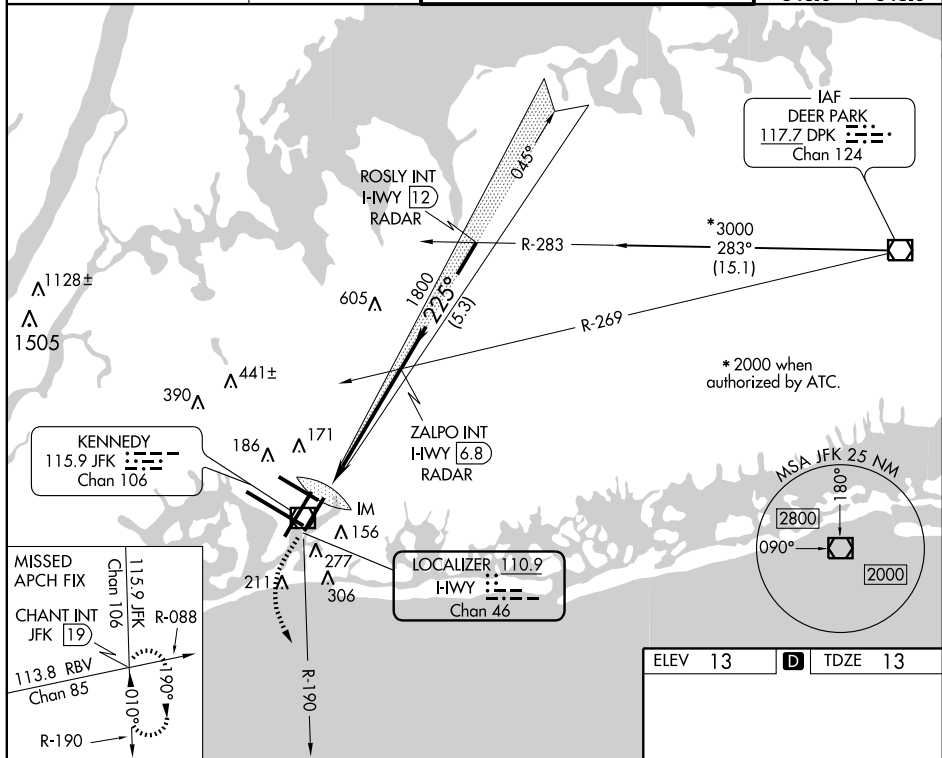


LOC/DME 1-HWY <b>110.9</b> Chan <b>46</b>	APP CRS <b>225°</b>	Rwy Idg <b>8400</b> TDZE <b>13</b> Apt Elev <b>13</b>
---	------------------------	---

## ILS RWY 22L (CAT II)

NEW YORK / JOHN F. KENNEDY INTL (JFK)

		ALSF-2 		MISSED APPROACH: Climb to 500 then climbing left turn to 3000 via JFK R-190 to CHANT INT/19 DME and hold.			
ATIS (ARR-NE) (ARR-SW)		NEW YORK APP CON		KENNEDY TOWER		GND CON	CLNC DEL
<b>128.725</b>	<b>117.7</b> <b>115.4</b>	<b>127.4</b> <b>269.0</b>	Rwy's 4R/22L and 13L/31R Rwy's 4L/22R and 13R/31L		<b>119.1</b> <b>281.55</b> <b>123.9</b> <b>281.55</b>	<b>121.9</b> <b>348.6</b>	<b>135.05</b> <b>348.6</b>



500

↑

3000

↶

JFK  
R-190

CHANT  
INT

ZALPO INT  
I-HWY 6.8  
RADAR

1800

225°

3000\*

\*2000 when  
authorized by ATC.

1800

ROSLY INT  
I-HWY 12  
RADAR

Procedure  
Turn NA

GS 3.00°

TCH 53'

13 MSL

RA 113

IM

959'

891'

5.3 NM

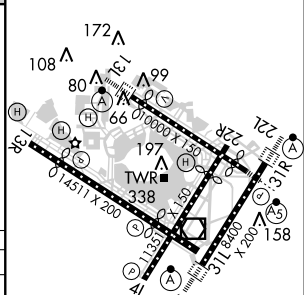
5.3 NM

DH

↶

CATEGORY	A	B	C	D
S-ILS 22L	RA 113/12 100 DA 113			

**CATEGORY II ILS - SPECIAL AIRCREW  
& AIRCRAFT CERTIFICATION REQUIRED**



HIRL all Rwys  
TDZ/CL Rwys 4R, 13L, 31R and 22L