

NEW YORK, NEW YORK

AL-610 (FAA)

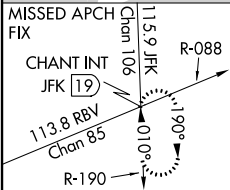
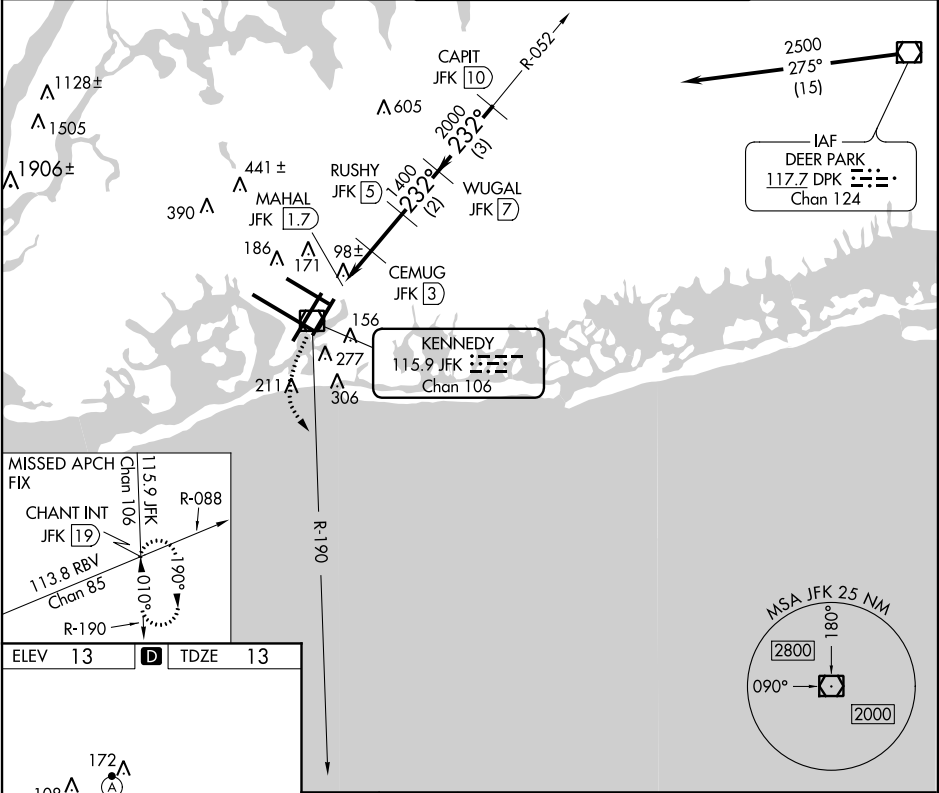
VOR/DME JFK	APP CRS	Rwy Idg	8400
115.9	232°	TDZE	13
Chan 106		Apt Elev	13

# VOR/DME RWY 22L

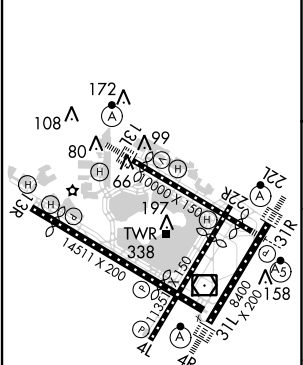
NEW YORK / JOHN F. KENNEDY INTL (JFK)

	ALSIF-2	MISSED APPROACH: Climbing left turn to 3000 via JFK R-190 to CHANT INT/19 DME and hold.
--	---------	---

ATIS (ARR-NE)	NEW YORK APP CON	KENNEDY TOWER	GND CON	CLNC DEL
128.725	127.4	Rwys 4R/22L and 13L/31R 119.1 281.55 Rwys 4L/22R and 13R/31L 123.9 281.55	121.9 348.6	135.05 348.6



ELEV 13	D	TDZE 13
---------	---	---------



3000	CHANT INT	CEMUG JFK [3]	RUSHY JFK [5]	WUGAL JFK [7]	CAPIT JFK [10]
JFK R-190					
VOR/DME	MAHAL JFK [1.7]	JFK [2.4]			
	600	1400	2000	2500	
	0.6	0.7	0.6	2 NM	3 NM
CATEGORY	A	B	C	D	
S-22L	440/24	427 (500-½)	440/40 427 (500-¾)	440/50 427 (500-1)	
CIRCLING	640-1	627 (700-1)	640-1¾ 627 (700-1¾)	640-2 627 (700-2)	

NEW YORK, NEW YORK  
Amdt 4D 13066

40°38'N-73°47'W

NEW YORK / JOHN F. KENNEDY INTL (JFK)

# VOR/DME RWY 22L

NE-2, 22 AUG 2013 to 19 SEP 2013

NE-2, 22 AUG 2013 to 19 SEP 2013