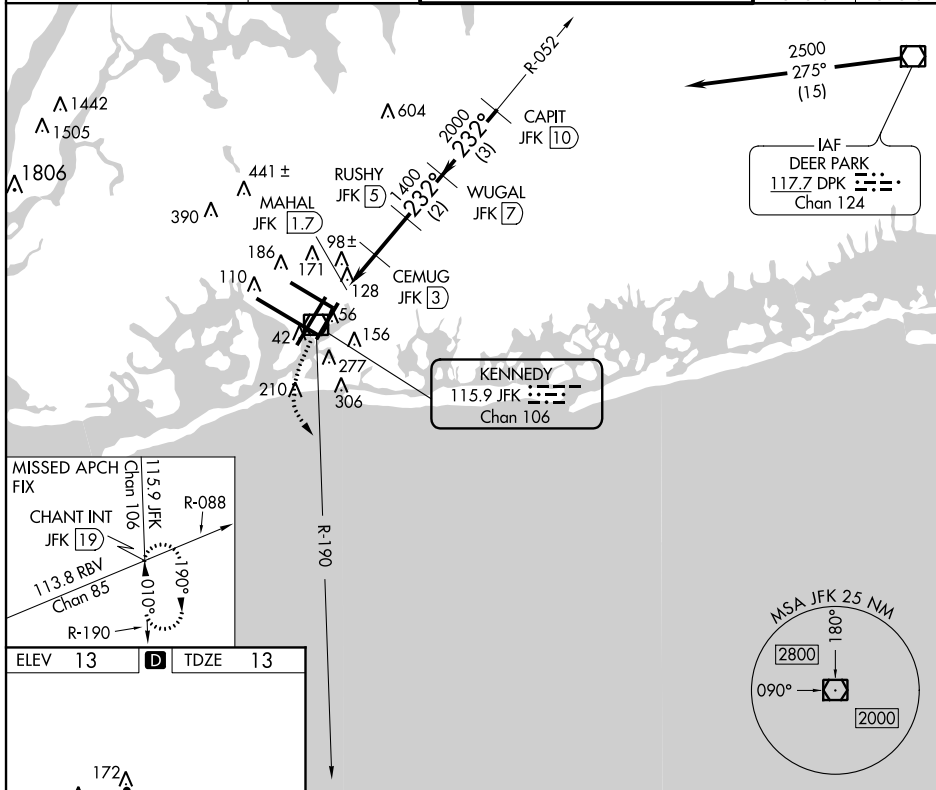


VOR/DME RWY 22L
JOHN F KENNEDY INTL (JFK)

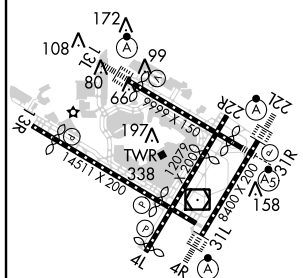


MISSED APPROACH: Climbing left turn to 3000
via JFK R-190 to CHANT INT/19 DME and hold.

ATIS		NEW YORK APP CON		KENNEDY TOWER		GND CON	CLNC DEL
(ARR-NE)	(ARR-SW)			Rwys 4R/22L and 13L/31R	119.1	281.55	121.9
128.725	117.7	128.12	269.0	Rwys 4L/22R and 13R/31L	123.9	281.55	135.05
							348.6



ELEV	13	D	TDZE	13
------	----	----------	------	----



RLLS Rwy 13R
HIRL all Rwy's
TDZ/CL Rwy's 4R, 13L, 31R and 22L

Figure 1: Example of a 4D chart. The chart displays a flight path with various waypoints and altitudes. The path starts at JFK R-190, passes through CEMUG JKF (3), RUSHY JKF (5), WUGAL JKF (7), and CAPIT JKF (10). The path includes a 232° turn and a 3.14° turn. The chart also shows the procedure turn NA and the 2500 ft altitude. The chart is divided into four categories: A, B, C, and D. Category A includes the initial climb and the 2500 ft altitude. Category B includes the 232° turn and the 3.14° turn. Category C includes the 1400 ft altitude and the 2000 ft altitude. Category D includes the 2500 ft altitude and the procedure turn NA.

CATEGORY	A	B	C	D
S-22L	440/24 427 (500-½)		440/40 427 (500-¾)	440/50 427 (500-1)
CIRCLING	640-1 627 (700-1)		640-1½ 627 (700-1¾)	640-2 627 (700-2)