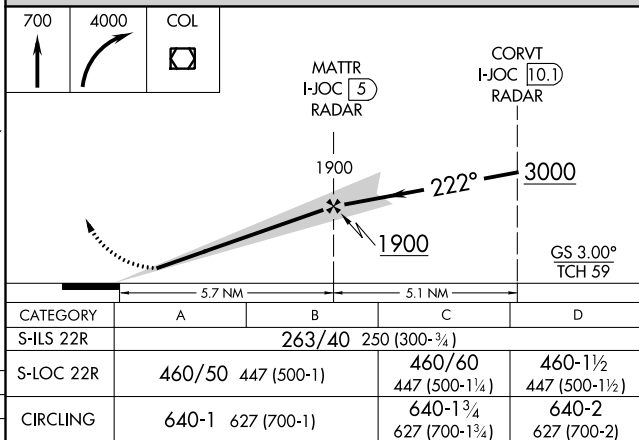
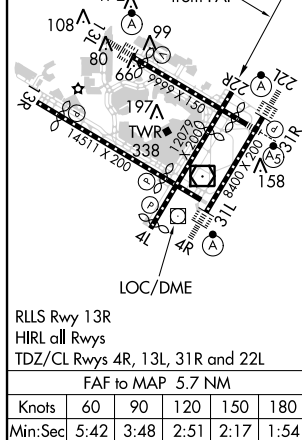
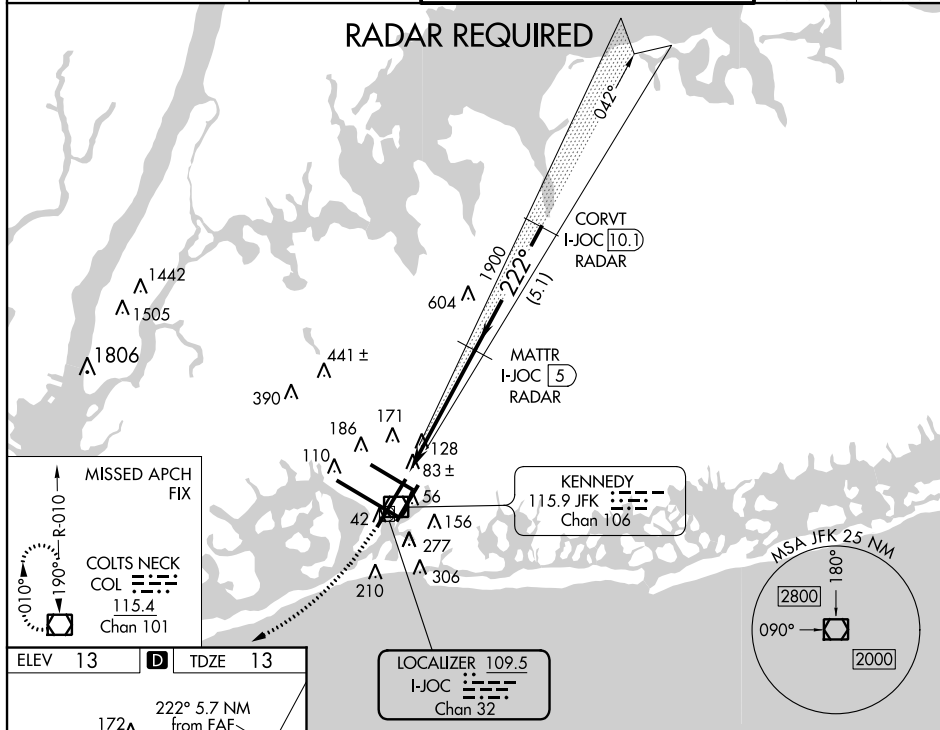


ILS RWY 22R
JOHN F KENNEDY INTL (JFK)

MISSED APPROACH: Climb to 700 then climbing right turn to 4000 direct COL VOR/DME and hold.

| ATIS (ARR-NE) (ARR-SW) | | NEW YORK APP CON | | KENNEDY TOWER | | GND CON | CLNC DEL | |
|---------------------------|-------|------------------|-------|-------------------------|-------|---------|----------|--------|
| 128.725 | 117.7 | 128.12 | 269.0 | Rwys 4R/22L and 13L/31R | 119.1 | 281.55 | 121.9 | 135.05 |
| | 115.4 | | | Rwys 4L/22R and 13R/31L | 123.9 | 281.55 | 348.6 | 348.6 |



NE-2, 20 AUG 2015 to 17 SEP 2015

NE-2. 20 AUG 2015 to 17 SEP 2015