

LOC/DME I-HWY	APP CRS	Rwy Idg
<b>110.9</b>	<b>225°</b>	<b>8400</b>
Chan <b>46</b>		TDZE <b>13</b>
		Apt Elev <b>13</b>

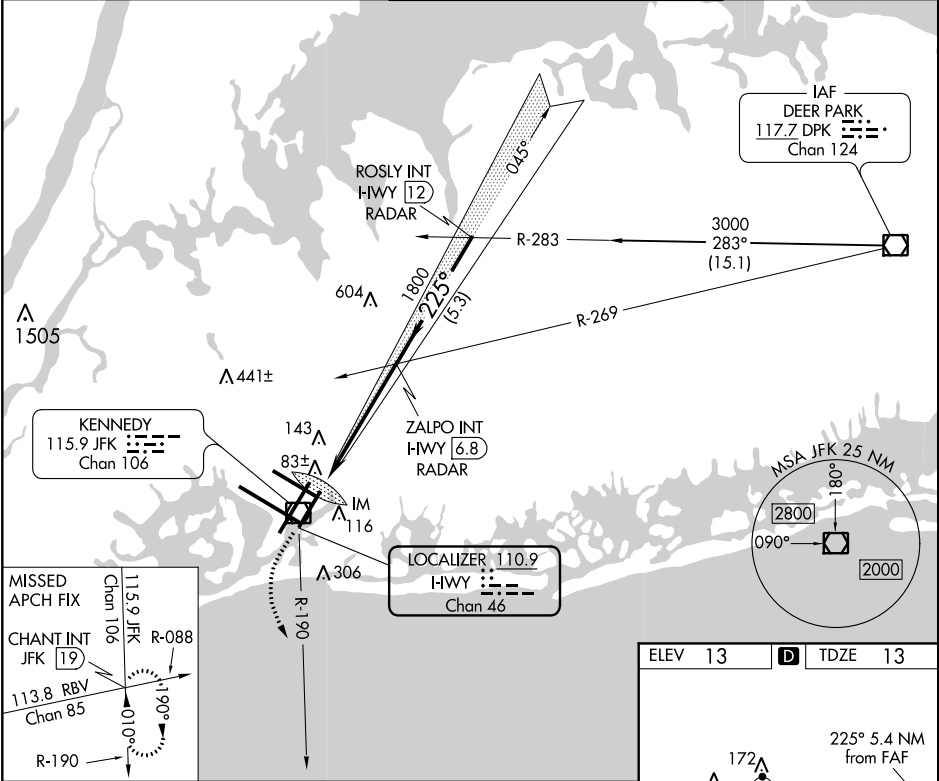
ILS or LOC RWY 22L  
JOHN F KENNEDY INTL (JFK)

**Simultaneous approach authorized with Rwy 22R.**

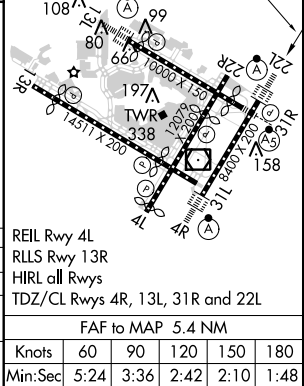
ALSf-2

MISSED APPROACH: Climb to 500 then climbing left turn to 3000 via JFK R-190 to CHANT INT/19 DME and hold.

D-ATIS (ARR/DEP) (ARR-NE) (ARR-SW)	NEW YORK APP CON	KENNEDY TOWER Rwys 4R/22L and 13L/31R Rwys 4L/22R and 13R/31L	GND CON	CLNC DEL	CPDLC
<b>128.725 117.7 115.4</b>	<b>128.12 269.0</b>	<b>119.1 281.55</b> <b>123.9 281.55</b>	<b>121.9 348.6</b>	<b>135.05 348.6</b>	



500	3000	CHANT INT	ZALPO INT I-HWY [6.8] RADAR	ROSLY INT I-HWY [12] RADAR	Procedure Turn NA
↑	JFK R-190		1800	1800	GS 3.00° TCH 53
0.2	5.2 NM	5.3 NM			
CATEGORY	A	B	C	D	
S-ILS 22L		213/18	200 (200-½)		
S-LOC 22L	460/24	447 (500-½)	460/40 447 (500-¾)	460/50 447 (500-1)	
CIRCLING	640-1	627 (700-1)	640-1¾ 627 (700-¾)	640-2 627 (700-2)	



NE-2: 17 AUG 2017 to 14 SEP 2017

NE-2: 17 AUG 2017 to 14 SEP 2017