

LOC/DME I-HWY	APP CRS	Rwy Idg	8400
<b>110.9</b>	<b>225°</b>	TDZE	<b>13</b>
Chan <b>46</b>		Apt Elev	<b>13</b>

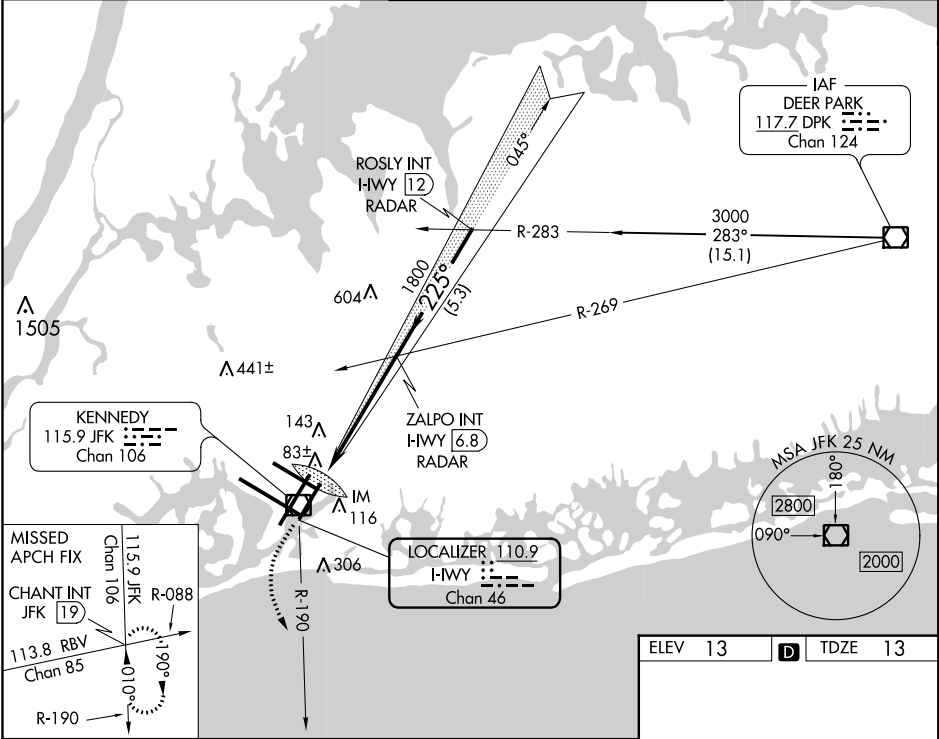
ILS RWY 22L (CAT II & III)  
JOHN F KENNEDY INTL (JFK)

**Simultaneous approach authorized with Rwy 22R.**

ALSF-2

MISSED APPROACH: Climb to 500 then climbing left turn to 3000 via JFK R-190 to CHANT INT/19 DME and hold.

D-ATIS (ARR/DEP) (ARR-NE) (ARR-SW)	NEW YORK APP CON	KENNEDY TOWER Rwys 4R/22L and 13L/31R Rwys 4L/22R and 13R/31L	GND CON	CLNC DEL	CPDLC
<b>128.725 117.7 115.4</b>	<b>128.12 269.0</b>	<b>119.1 281.55</b> <b>123.9 281.55</b>	<b>121.9</b> <b>348.6</b>	<b>135.05</b> <b>348.6</b>	



500	3000	CHANT INT	ZALPO INT I-HWY 6.8 RADAR	ROSLY INT I-HWY 12 RADAR	Procedure Turn NA
JFK R-190			1800	3000	GS 3.00° TCH 53
IM 117			1800		
9.5°	5.4 NM	5.3 NM			
CATEGORY	A	B	C	D	
S-ILS 22L	CAT II RA 113/12 100 DA 113				
S-ILS 22L	CAT IIIa RVR 07				
S-ILS 22L	CAT IIIb RVR 06				
S-ILS 22L	CAT IIIc NA				
<b>CATEGORY II &amp; III ILS - SPECIAL AIRCREW &amp; AIRCRAFT CERTIFICATION REQUIRED</b>					

