

AL-610 (FAA)

VOR/DME JFK 115.9 Chan 106	APP CRS 232°	Rwy Idg 8400 TDZE 13 Apt Elev 13
--	------------------------	---

VOR/DME RWY 22L
NEW YORK / JOHN F. KENNEDY INTL (JFK)



ALSF-2

MISSED APPROACH: Climbing left turn to 3000
via JFK R-190 to CHANT INT/19 DME and hold.

ATIS		NEW YORK APP CON		KENNEDY TOWER		GND CON	CLNC DEL
(ARR-NE)	(ARR-SW)			Rwys 4R/22L and 13L/31R	119.1 281.55	121.9	135.05
128.725	117.7	127.4	269.0	Rwys 4L/22R and 13R/31L	123.9 281.55	348.6	348.6

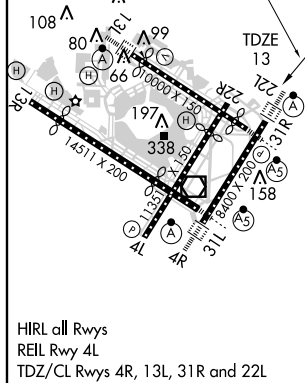
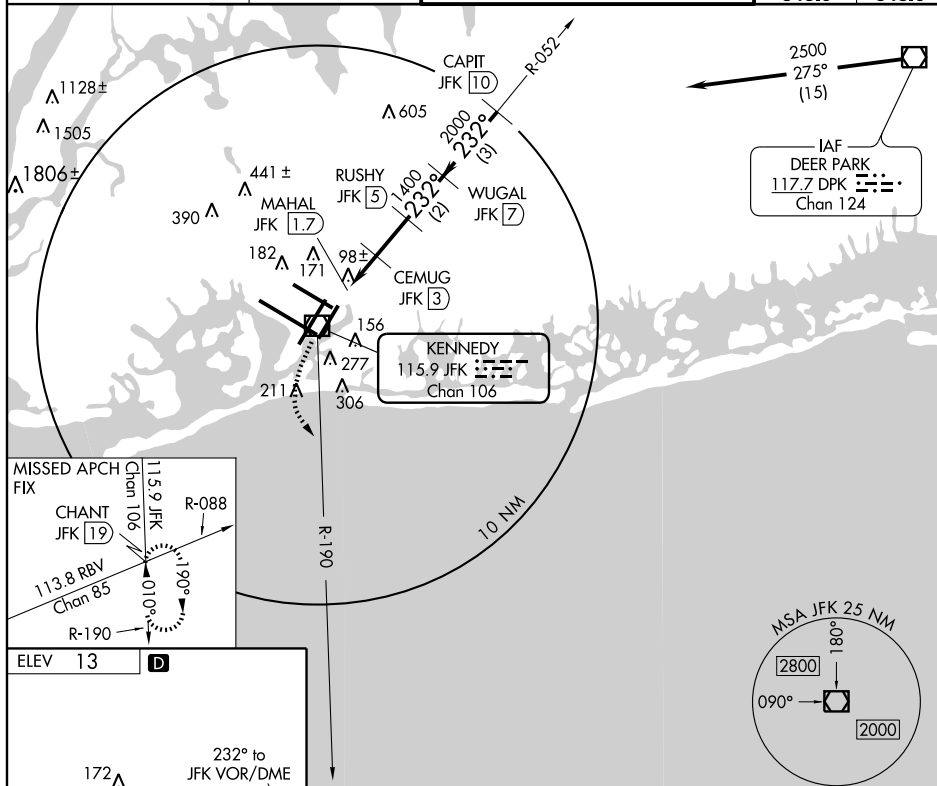


Figure 1-1 illustrates a 4-segment RNAV approach. The approach starts at 3000 feet, descends to 2500 feet, then to 1400 feet, and finally to 600 feet. Key waypoints include JFK R-190, CHANT INT, CEMUG JKF (3), MAHAL JKF (1.7), RUSHY JKF (5), WUGAL JKF (7), and CAPIT JKF (10). The approach includes a VOR/DME arc, a 232° turn, and a 3.14° turn. The final segment is a 600-foot altitude with a 69° turn. The diagram also shows the 2 NM and 3 NM segments of the approach.

CATEGORY	A	B	C	D
S-22L	440/24 427 (500-½)		440/40 427 (500-¾)	440/50 427 (500-1)
CIRCLING	640-1 627 (700-1)		640-1½ 627 (700-1¾)	640-2 627 (700-2)

NEW YORK, NEW YORK
Amdt 4D 10210

NEW YORK / JOHN F. KENNEDY INTL (JFK)
VOR/DME RWY 22L

40°38'N - 73°47'W

NE-2. 29 JUL 2010 to 26 AUG 2010