

NEW YORK, NEW YORK

AL-610 (FAA)

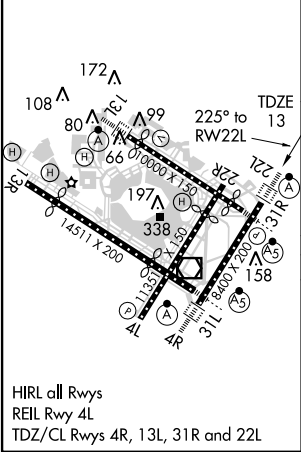
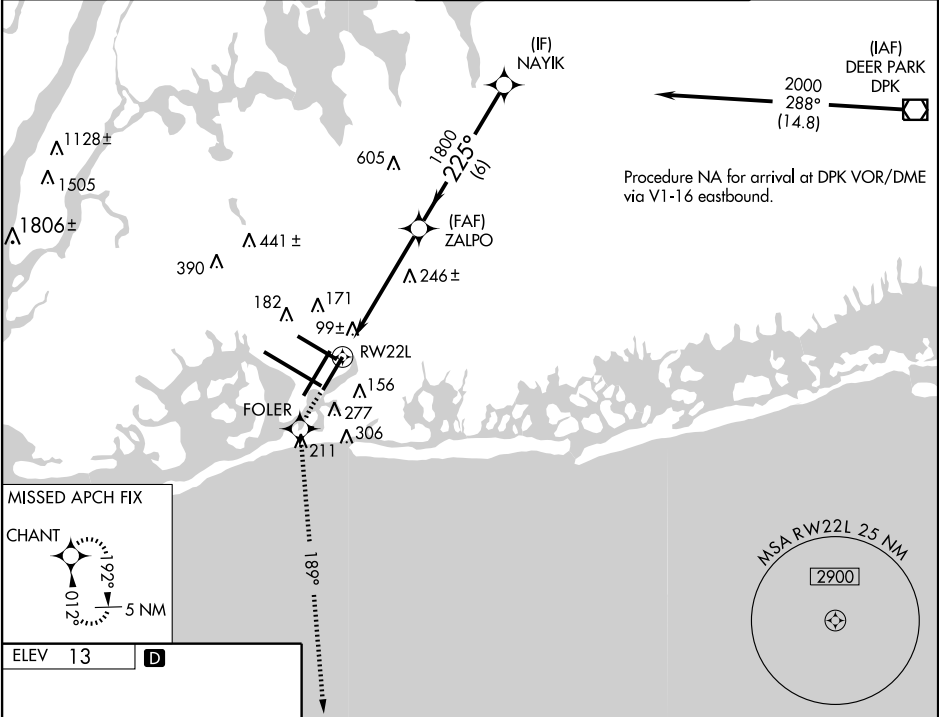
WAAS CH 97318 W22A	APP CRS 225°	Rwy Idg TDZE 13 Apt Elev 13	8400
--	------------------------	---	-------------

RNAV (GPS) Y RWY 22L

NEW YORK / JOHN F. KENNEDY INTL (JFK)

▼ For uncompensated Baro-VNAV systems, UNAV/VNAV NA below -13°C (8°F) or above 49°C (120°F). DME/DME RNP-0.3 NA.	ALSF-2 	MISSED APPROACH: Climb to 3000 direct FOLER and via 189° track to CHANT and hold.
--	------------	---

ATIS (ARR-NE)	(ARR-SW)	NEW YORK APP CON	KENNEDY TOWER Rwys 4R/22L and 13L/31R Rwys 4L/22R and 13R/31L	GND CON	CLNC DEL
128.725	117.7	115.4	127.4 269.0 119.1 281.55 123.9 281.55	121.9 121.9 348.6	135.05 135.05 348.6



3000	FOLER	tr 189°	CHANT	VGSI and RNAV glidepath not coincident.	Procedure Turn NA
*LNAV only RW22L *1.5 NM to RW22L ZALPO 225° 1800 2000 GS 3.00° TCH 53					
CATEGORY	A	B	C	D	
LPV DA	270/24		257 (300-½)		
LNAV/VNAV DA	420/50		407 (500-1)		
LNAV MDA	560/24 547 (600-½)		560/50 547 (600-1)		560/60 547 (600-1¼)
CIRCLING	640-1 627 (700-1)		640-1¼ 627 (700-1¼)		640-2 627 (700-2)

NEW YORK, NEW YORK
Amdt 1B 10210

NEW YORK / JOHN F. KENNEDY INTL (JFK)
40°38'N - 73°47'W
RNAV (GPS) Y RWY 22L

NE-2, 29 JUL 2010 to 26 AUG 2010

NE-2, 29 JUL 2010 to 26 AUG 2010