
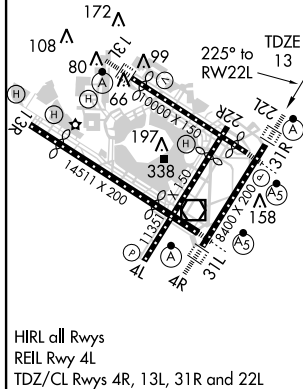
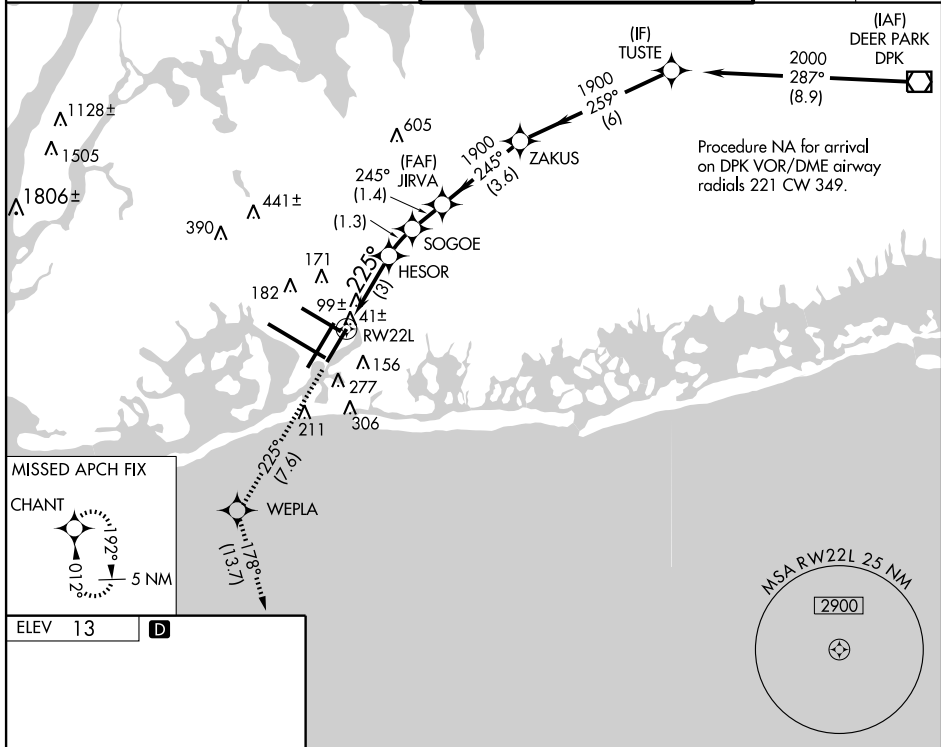


NEW YORK / JOHN F. KENNEDY INTL (JFK)

<p>T</p> <p>NA</p>	<p>For uncompensated Baro-VNAV systems, procedure NA below -13°C (8°F) or above 49°C (120°F). RF and GPS Required. For inoperative ALSF, increase RNP 0.20 DA visibility to RVR 5000 all Cats, RNP 0.30 DA visibility to RVR 6000 all Cats. Visibility reduction by helicopters NA.</p>	<p>ALSF-2</p> 	<p>MISSED APPROACH: Climb to 3000 via 225° track to WEPLA and via 178° track to CHANT and hold.</p>
----------------------------------	---	---	--

ATIS (ARR-NE) (ARR-SW)			NEW YORK APP CON		KENNEDY TOWER		GND CON	CLNC DEL
128,725	117.7	115.4	127.4	269.0	Rwys 4R/22L and 13L/31R 119.1	281.55	121.9	135.05
					Rwys 4L/22R and 13R/31L 123.9	281.55	348.6	348.6



3000 ↑ tr 225°	WEPLA ✦ tr 178°	CHANT ✦	JIRVA 1900	ZAKUS	TUSTE 2000	Procedure Turn NA
VGS1 and RNAV glidepath not coincident.			HESOR 1017	SOGOE 1426	245°	GP 3.00° TCH 50
RW22L 225°			245°		1900	
3 NM		1.3 NM	1.4 NM	3.6 NM	6 NM	
CATEGORY	A		B		C	D
RNP 0.20 DA			339/40		326 (400-34)	
RNP 0.30 DA			408/50		395 (400-1)	

**SPECIAL AIRCRAFT AND AIRCREW
AUTHORIZATION REQUIRED**