

NEW YORK, NEW YORK

AL-610 (FAA)

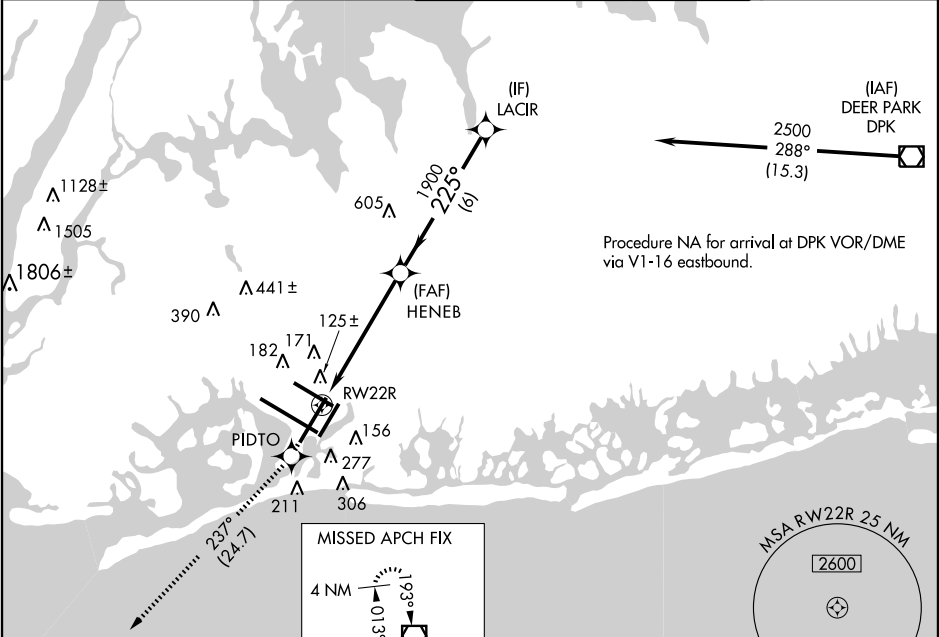
WAAS CH 40019 W22B	APP CRS 225°	Rwy Idg TDZE Apt Elev 13	8655 13 13
--	------------------------	---------------------------------------	---------------------------------------

RNAV (GPS) RWY 22R

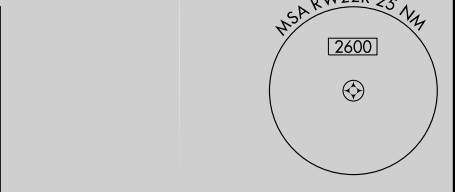
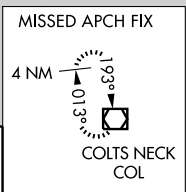
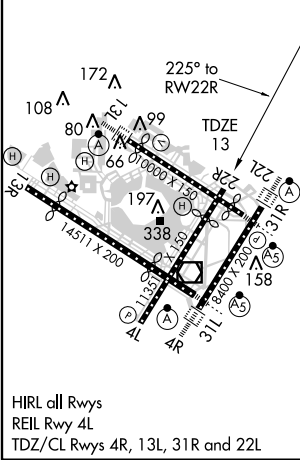
NEW YORK / JOHN F. KENNEDY INTL (JFK)

▽ DME/DME RNP -0.3 NA. Baro-VNAV NA below -15°C (5°F).	MISSED APPROACH: Climb to 4000 direct PIDTO and right turn via 237° track to COL VOR/DME and hold.
---	---

ATIS (ARR-NE) (ARR-SW) 128.725 117.7 115.4	NEW YORK APP CON 127.4 269.0	KENNEDY TOWER Rwys 4R/22L and 13L/31R 119.1 281.55 Rwys 4L/22R and 13R/31L 123.9 281.55	GND CON 121.9 135.05 348.6 348.6	CLNC DEL 135.05 348.6
---	--	---	--	---



ELEV 13	D
---------	----------



4000 ↑	PIDTO 	COL 	Procedure Turn NA	
*LNAV only				
		LACIR		
		2500		
		GS 3.00° TCH 59		
CATEGORY	A	B	C	D
LPV DA	270/40 257 (300-¾)			
LNAV/ VNAV DA	480-1½ 467 (500-1½)			
LNAV MDA	600/50 587 (600-1)	600-1½ 587 (600-1½)	600-1¾ 587 (600-1¾)	
CIRCLING	640-1½ 627 (700-1½)	640-1¾ 627 (700-1¾)	640-2 627 (700-2)	

NEW YORK, NEW YORK
Amdt 1 10210

NEW YORK / JOHN F. KENNEDY INTL (JFK)
40°38'N - 73°47'W
RNAV (GPS) RWY 22R

NE-2, 29 JUL 2010 to 26 AUG 2010

NE-2, 29 JUL 2010 to 26 AUG 2010