

NEW YORK, NEW YORK

AL-610 (FAA)

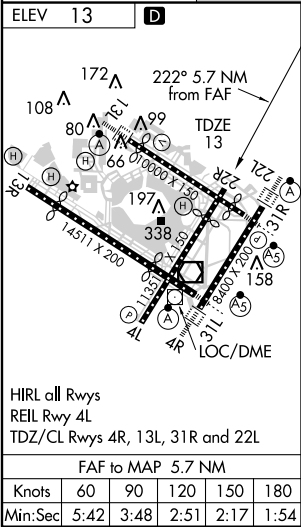
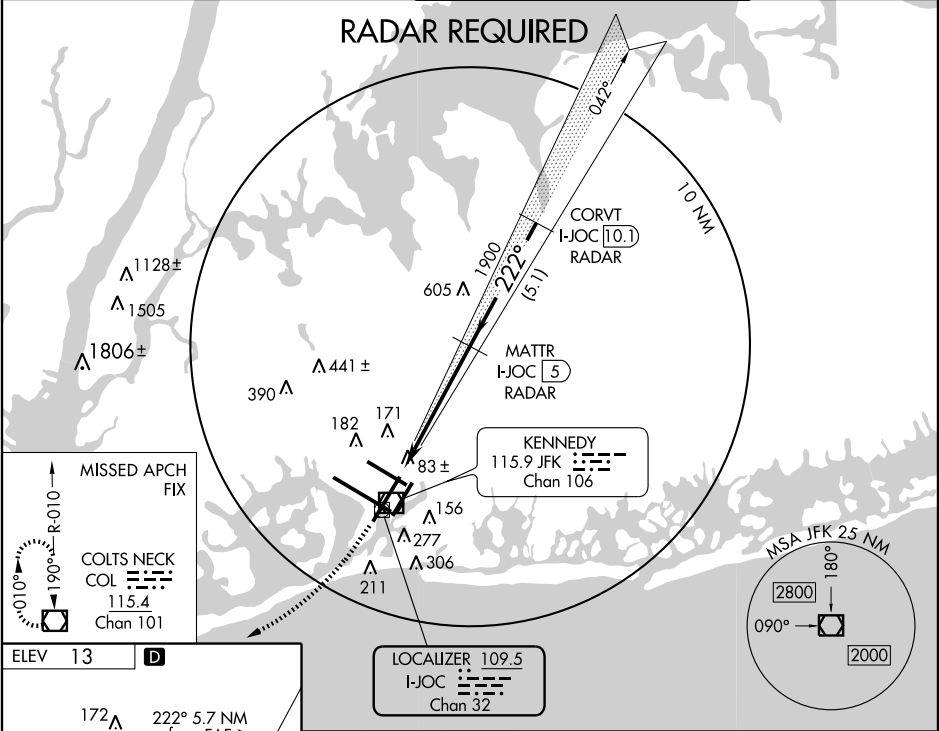
LOC/DME I-JOC	APP CRS	Rwy Idg	8655
109.5	222°	TDZE	13
Chan 32		Apt Elev	13

ILS RWY 22R

NEW YORK / JOHN F. KENNEDY INTL (JFK)

	MISSED APPROACH: Climb to 700 then climbing right turn to 4000 direct COL VOR/DME and hold.			
--	---	--	--	--

ATIS (ARR-NE)	(ARR-SW)	NEW YORK APP CON	KENNEDY TOWER	GND CON	CLNC DEL
128.725	117.7	115.4	127.4 269.0	Rwys 4R/22L and 13L/31R 119.1 281.55 Rwys 4L/22R and 13R/31L 123.9 281.55	121.9 135.05 348.6 348.6



ELEV 13	D	700	4000	COL	MATTR I-JOC [5] RADAR	CORVT I-JOC [10.1] RADAR	3000*	GS 3.00° TCH 59
*1900 when authorized by ATC.								
5.7 NM, 5.1 NM								
CATEGORY	A	B	C	D				
S-ILS 22R	263/40 250 (300-¾)							
S-LOC 22R	460/50	447 (500-1)	460/60 447 (500-1¼)	460-1½ 447 (500-1½)				
CIRCLING	640-1	627 (700-1)	640-1¾ 627 (700-1¾)	640-2 627 (700-2)				

NEW YORK, NEW YORK

Amtd 2 10210

NEW YORK / JOHN F. KENNEDY INTL (JFK)

40°38'N - 73°47'W

ILS RWY 22R

NE-2, 29 JUL 2010 to 26 AUG 2010

NE-2, 29 JUL 2010 to 26 AUG 2010