

AL-610 (FAA)

VOR/DME JFK 115.9 Chan 106	APP CRS 232°	Rwy Idg 8400 TDZE 13 Apt Elev 13
--	------------------------	---

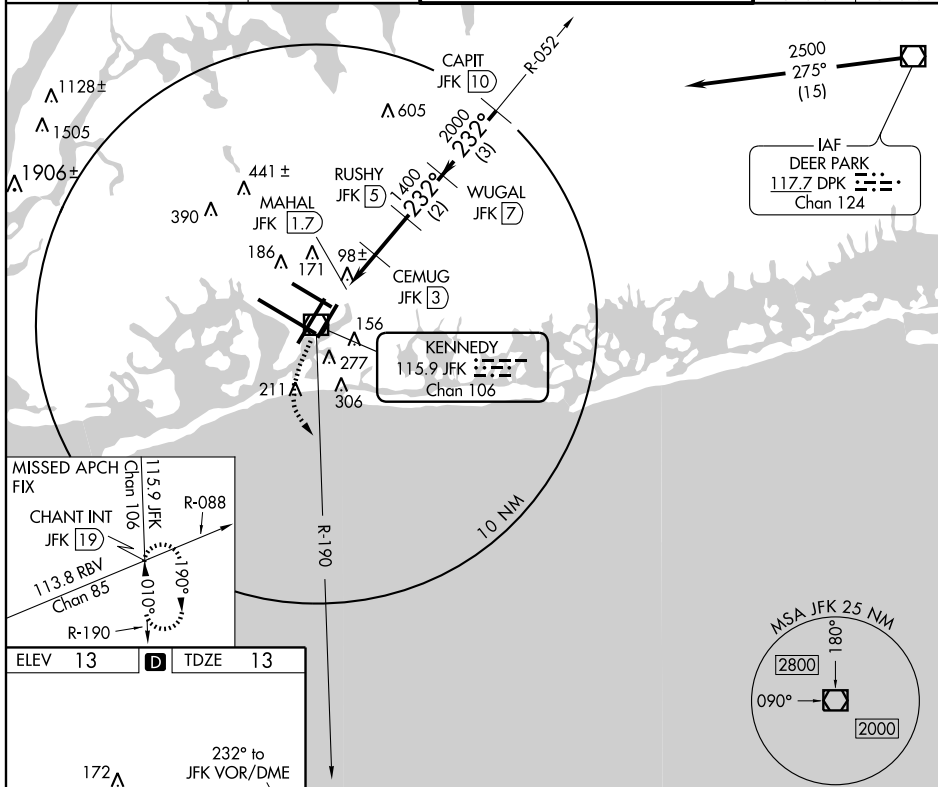
VOR/DME RWY 22L
NEW YORK / JOHN F. KENNEDY INTL (JFK)



ALSF-2

MISSED APPROACH: Climbing left turn to 3000 via JFK R-190 to CHANT INT/19 DME and hold.

ATIS (ARR-NE) (ARR-SW)		NEW YORK APP CON		KENNEDY TOWER		GND CON	CLNC DEL
128.725	117.7	115.4	127.4	269.0	Rwys 4R/22L and 13L/31R Rwys 4L/22R and 13R/31L	119.1 281.55 123.9 281.55	121.9 135.05 348.6 348.6



HIRL all Rwyys
TDZ/CL Rwyys 4R, 13L, 31R and 22L

NEW YORK, NEW YORK
Amdt 4D 11069

NEW YORK / JOHN F. KENNEDY INTL (JFK)
VOR/DME RWY 22L

40°38'N - 73°47'W

NE-2: 28 JUL 2011 to 25 AUG 2011