



NEW YORK, NEW YORK

AL-610 (FAA)

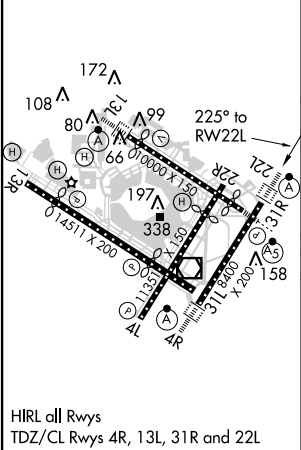
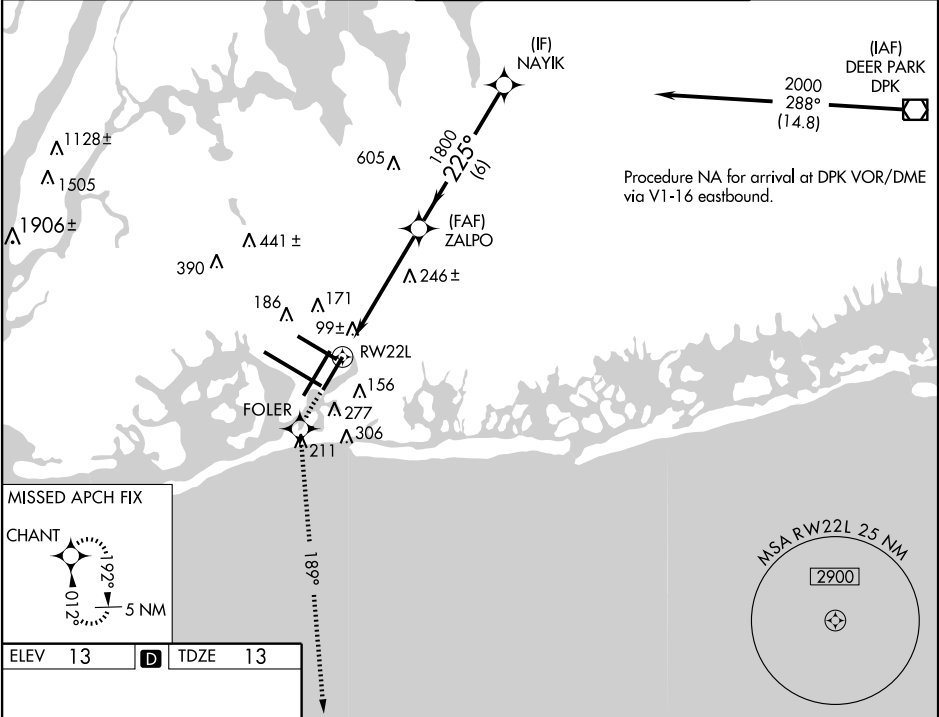
WAAS CH 97318 W22A	APP CRS 225°	Rwy Idg TDZE Apt Elev	8400 13 13
--	------------------------	-----------------------------	---------------------------------------

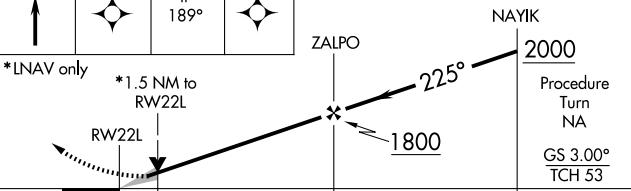
RNAV (GPS) Y RWY 22L

NEW YORK / JOHN F. KENNEDY INTL (JFK)

 For uncompensated Baro-VNAV systems, UNAV/VNAV NA below -13°C (8°F) or above 49°C (120°F). DME/DME RNP-0.3 NA.	ALSF-2 	MISSED APPROACH: Climb to 3000 direct FOLER and via 189° track to CHANT and hold.
---	---	---

ATIS (ARR-NE) (ARR-SW)	NEW YORK APP CON	KENNEDY TOWER Rwys 4R/22L and 13L/31R Rwys 4L/22R and 13R/31L	GND CON	CLNC DEL
128.725 117.7 115.4	127.4 269.0	119.1 281.55 123.9 281.55	121.9 348.6	135.05 348.6



3000	FOLER	tr 189°	CHANT	VGSI and RNAV glidepath not coincident (VGSI Angle 3.00/TCH 66).
				
CATEGORY	A	B	C	D
LPV DA	270/24 257 (300-½)			
LNNAV/VNAV DA	420/50 407 (500-1)			
LNNAV MDA	560/24 547 (600-½)	560/50 547 (600-1)	560/60 547 (600-1¼)	
CIRCLING	640-1 627 (700-1)	640-1¼ 627 (700-1¼)	640-2 627 (700-2)	

NEW YORK, NEW YORK
Amdt 1B 11069

NEW YORK / JOHN F. KENNEDY INTL (JFK)
40°38'N - 73°47'W
RNAV (GPS) Y RWY 22L

NE-2, 28 JUL 2011 to 25 AUG 2011

NE-2, 28 JUL 2011 to 25 AUG 2011